

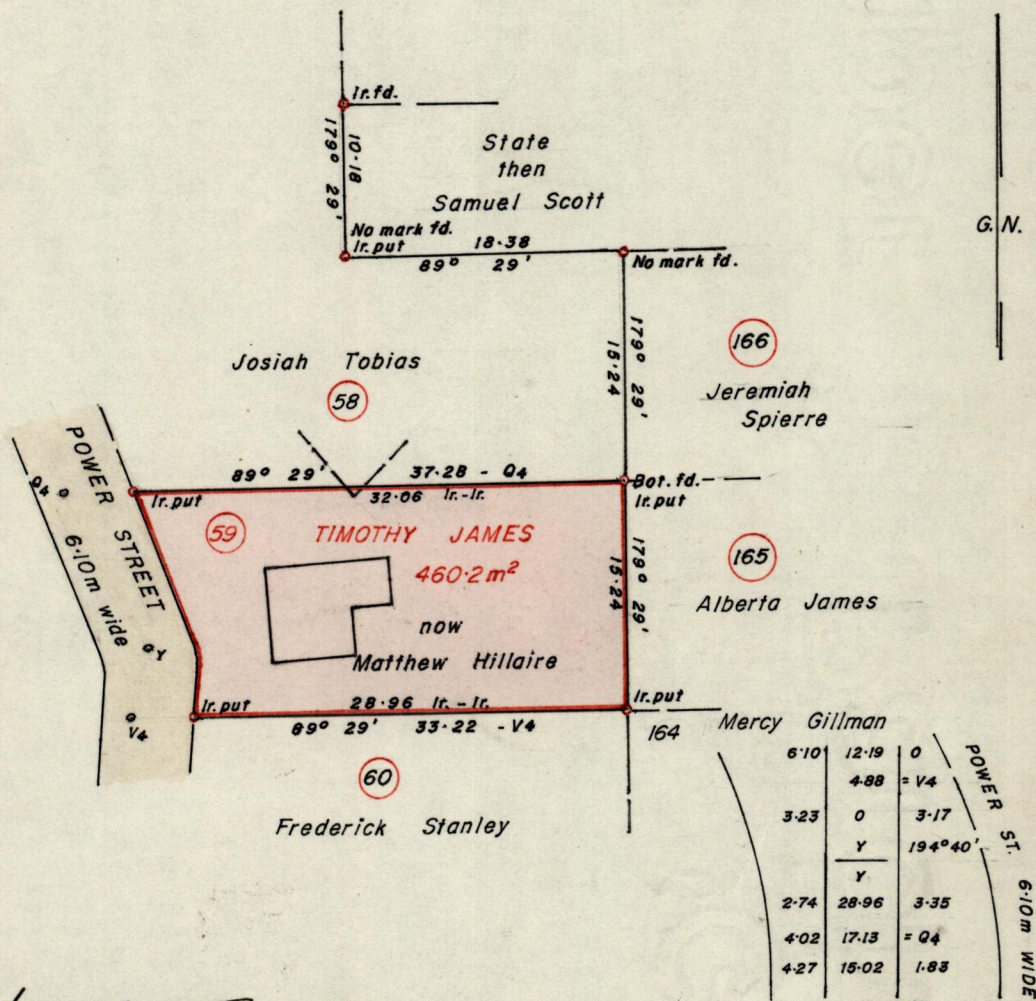
No 18036

R.P.O. Vol. 434
C.T. Vol.

Fol. 359
Fol.

Ward of Toco
County of St. David
Cadastral Sheet C5E

PETIT TROU VILLAGE
PLAN L.B.22



Approved

Alwyn Hill
Director of Surveys
88.02.23

S.O. 22/54
F. Bk. Vol. 52 Fol. 91

SCALE 1-500

Note: To obtain compass bearings add/subtract 31 minutes Distances are in Metres

PLAN of a Parcel of land coloured pink in the Ward of Toco
Containing four hundred and sixty point two square metres
Surveyed by me, with due authority, in January 1985

I certify that I have complied with rule 76 under section 14(2)(d) of the
Land Surveyors' Ordinance 1952, and that this plan is correct.

Checked by *[Signature]* 1/2/88

Entered

Land Surveyor, Trinidad

[Signature]
26th Sept 1987