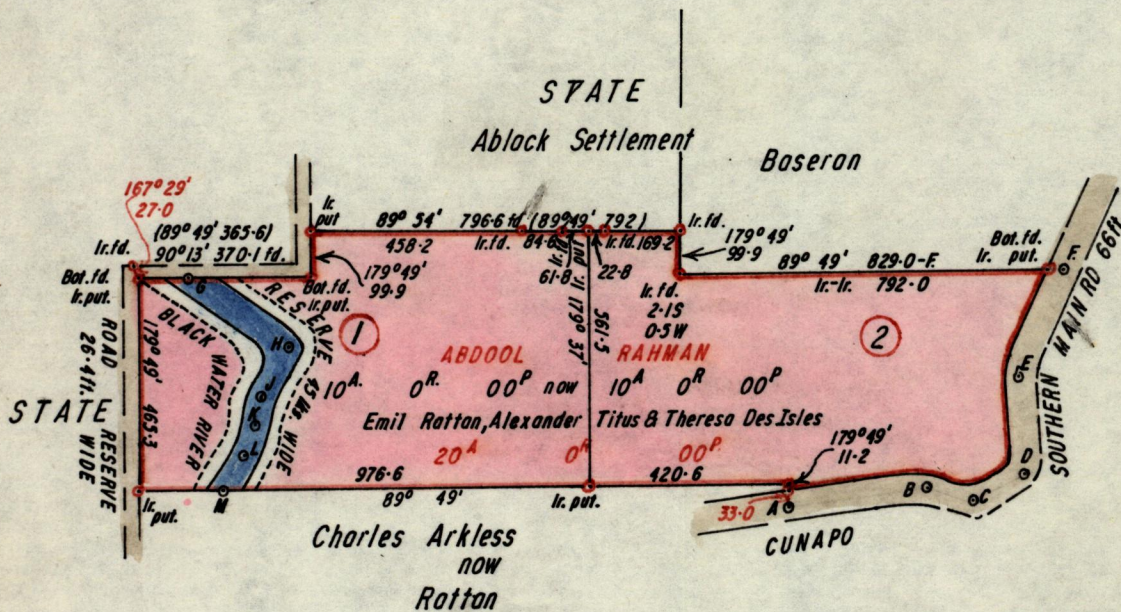


No 2814

R.P.O. Vol. 221  
C.T. Vol.

Fol. 141  
Fol.

Ward of Choruma  
County of Noriva  
Cadastral Sheet E.16.6



A - B	83° 30'	305.2
B - C	107° 36'	101.6
C - D	60° 49'	126.1
D - E	355° 55'	209.2
E - F	25° 28'	254.8

CENTRE LINE of BLACK WATER RIVER

G - H	124° 00'	270.6
H - J	209° 15'	122.1
J - K	194° 15'	66.0
K - L	196° 15'	62.7
L - M	208° 35'	89.1

Approved *John Samuel*  
22.6.81. Director of Surveys

SCALE 1:5000

Note: To obtain compass bearings add/subtract // minutes Distances are in feet

PLAN of 2 Parcel of land coloured pink in the Ward of Choruma  
Containing together twenty acres

Surveyed by me, with due authority, in Nov. 1980

I certify that I have complied with rule 76 under section 14(2)(d) of the Land Surveyors' Ordinance 1952, and that this plan is correct.

Checked by *Winton Ramcharan* 22/6/81. Land Surveyor, Trinidad 4<sup>th</sup> June 1981

Entered ..... Land Surveyor, Trinidad 4<sup>th</sup> June 1981

304