

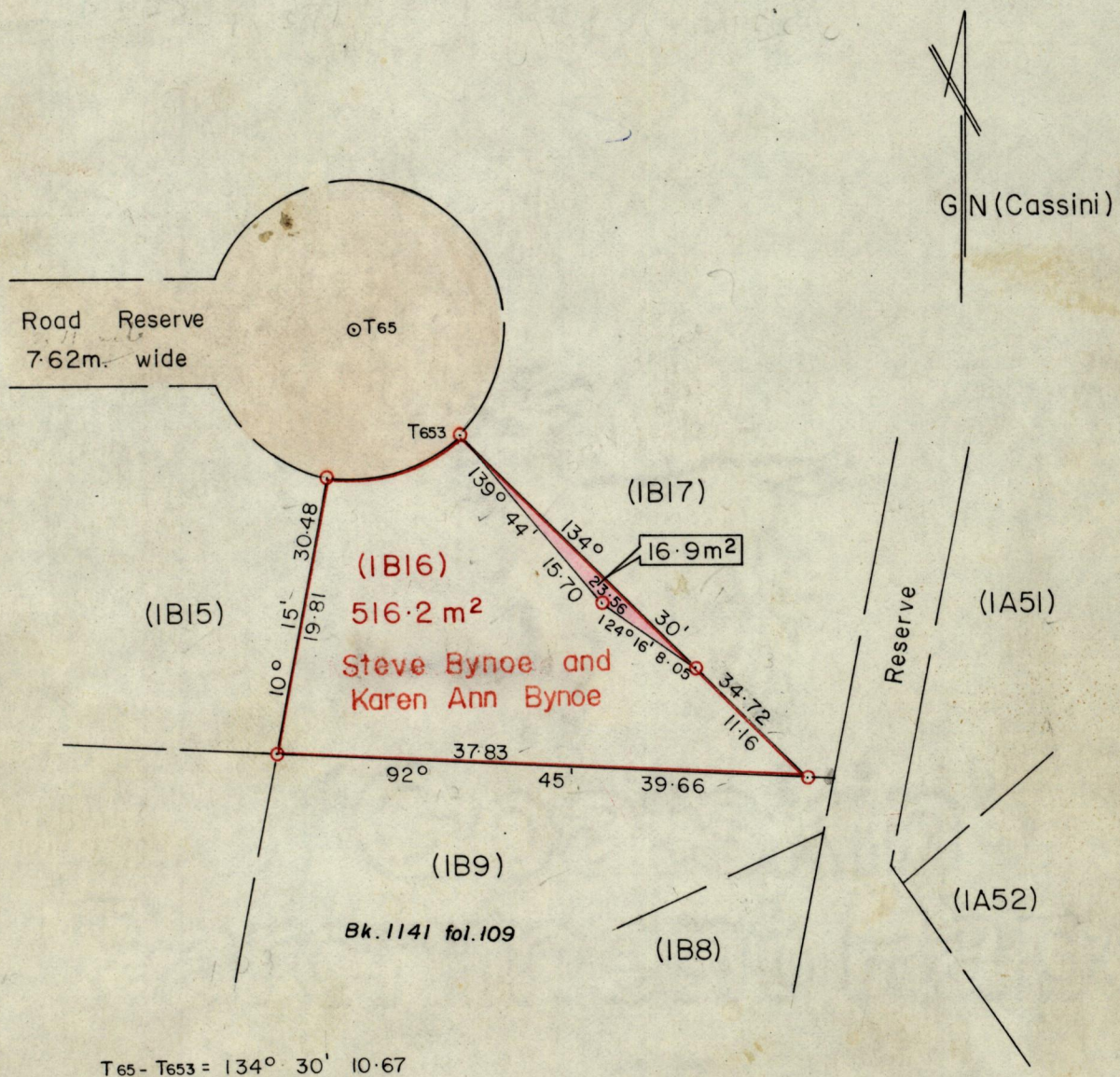
Nº 48405

R.P.O. Vol. 9
C.T. Vol. 2869

Fol. 643
Fol. 485

Gen. Plan Vol. 2613 Fol. 281

Ward of Arima
County of St. George 24B
Cadastral Sheet B. 24. B. 2/d



⊙ Denotes Iron put.

Approved

Alwyn Thiel
 Director of Surveys
 88.01.08

SCALE 1:500

Note: To obtain compass bearings add/subtract 8 minutes Distances are in METRES

PLAN of a Parcel of land coloured pink in the Ward of Arima
Containing sixteen point nine square metres.

Surveyed by me, with due authority, in September 1983.

I certify that I have complied with rule 76 under Section 14 (2) (d) of the Land Surveyors' Ordinance 1952, and that this plan is correct.

Checked by *[Signature]* 7/1/83

Cuthbert Bazel
 Land Surveyor, Trinidad 23rd September 1983.