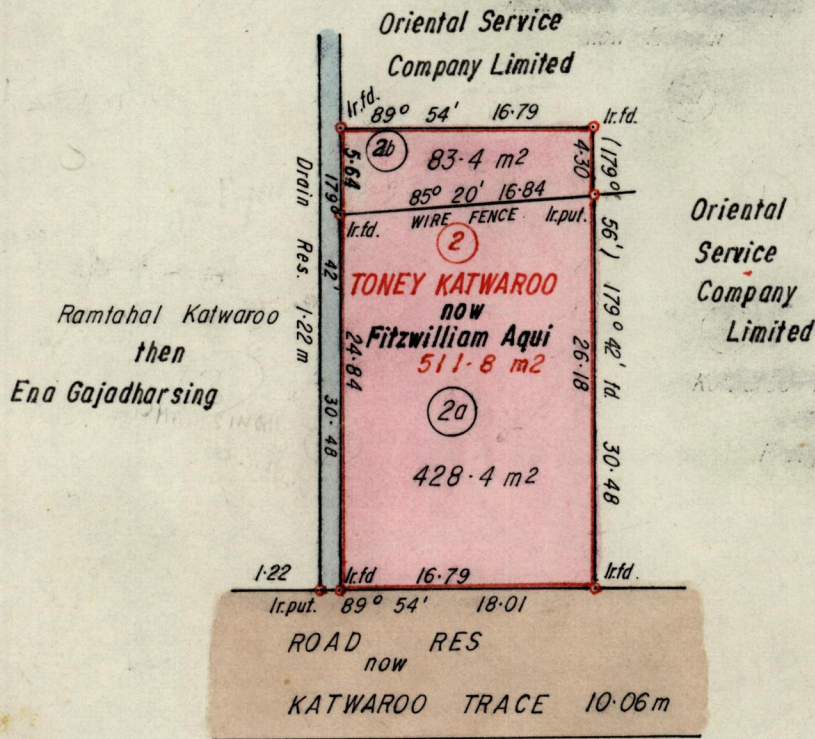


No 22037

R.P.O. Vol. 432
C.T. Vol. 2807

Fol. 65
Fol. 555

Ward of Manzanilla
County of St. Andrew
Cadastral Sheet C.22.1. $\frac{25F}{1/b}$



Approved

Alwyn Thiele
 Director of Surveys
 88.01.08

Redefinition BK 1236 fol. 57

SCALE 1:500

Note: To obtain compass bearings add/subtract 18 minutes Distances are in metres.

PLAN of 2 Parcel of land coloured pink in the Ward of Manzanilla
 Containing together five hundred and eleven point eight square metres.
 Surveyed by me, with due authority, in January & February 1985.
 I certify that I have complied with rule 76 under section 14(2)(d) of the
 Land Surveyors' Ordinance 1952, and that this plan is correct.

Checked by *2/1/88*

Fitzwilliam AQUI
 Land Surveyor, Trinidad 19 87