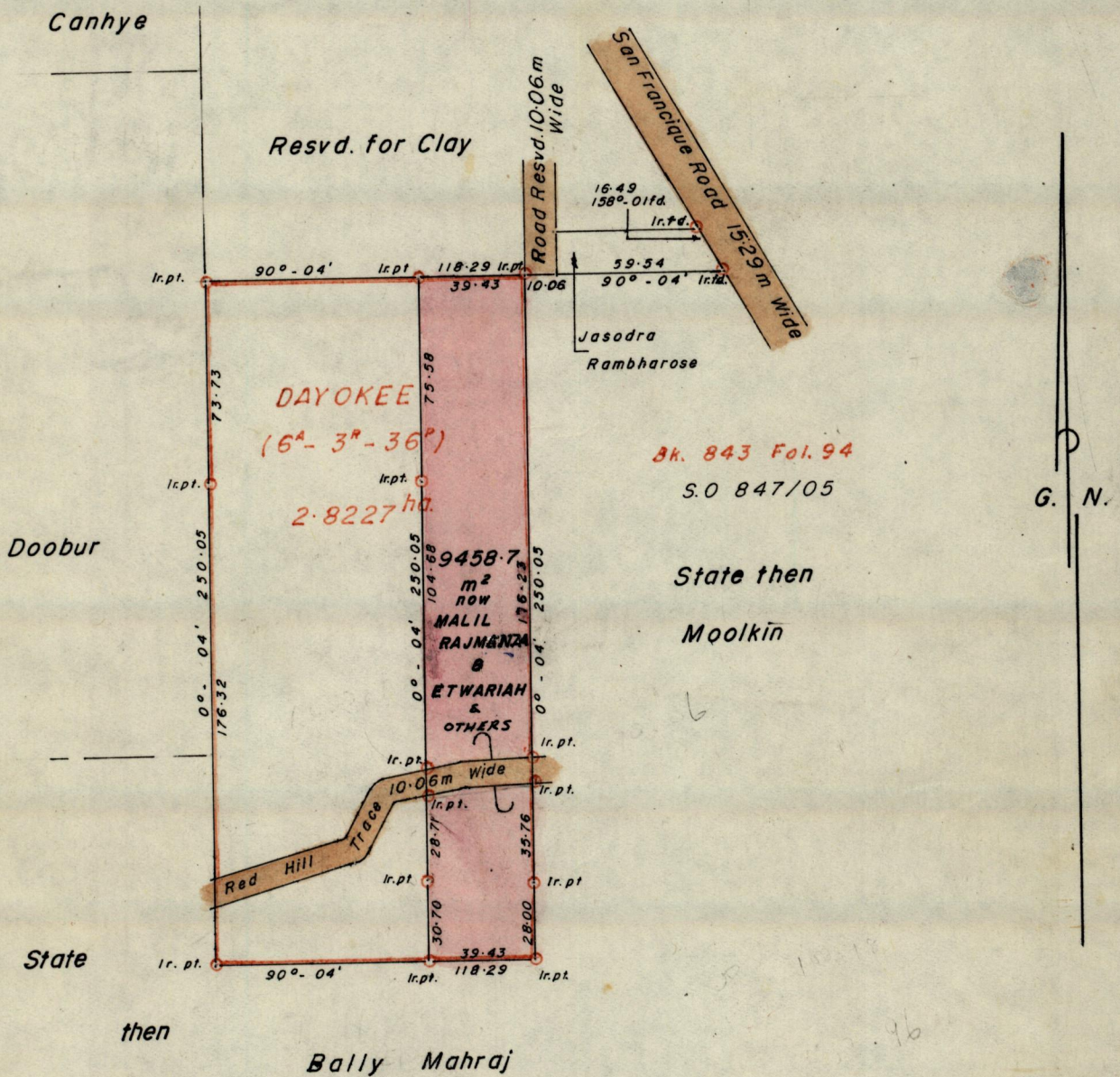


R.P.O. Vol 169
C.T. Vol.

Fol. 643
Fol.

Ward of Siparia
County of St. Patrick
Cadastral Sheet G12G (63E)



Approved

K.B. Joseph
Director of Surveys
85.9.27

SCALE 1/2500

Note: To obtain compass bearings add/subtract 4 minutes Distances are in Metres.

PLAN of a Parcel of land coloured pink in the Ward of Siparia.
Containing Nine thousand four hundred and fifty eight point seven sq. metres.
Surveyed by me, with due authority, on 26th October 1983.

I certify that I have complied with rule 76 under section 14(2)(d) of the
Land Surveyors' Ordinance 1952, and that this plan is correct.

Checked by *48* 85.10.9/27

[Signature]
Land Surveyor, Trinidad 10 Nov 1983

lr.pt.	69.79			
lr.pt.	59.41			Red Hill Tr.
lr.pt.	30.70			
	0			
lr.pt.				0°-04'
lr.pt.	39.43			
	0			
lr.pt.				270°-04'
lr.pt.	250.05			
lr.pt.	222.05	26.8°-13'	255°-38'	
		25.76	14.13	
lr.pt.	186.29			Red Hill Traco
lr.pt.	176.23	26.8°-13'	255°-38'	
	0	27.21	12.64	
lr.pt.				180°-04'
lr.pt.	39.43			
	0			
lr.pt.				90°-04'
	180.26			lr.pt.
	104.68			lr.pt.
lr.pt.	0			0°-04'