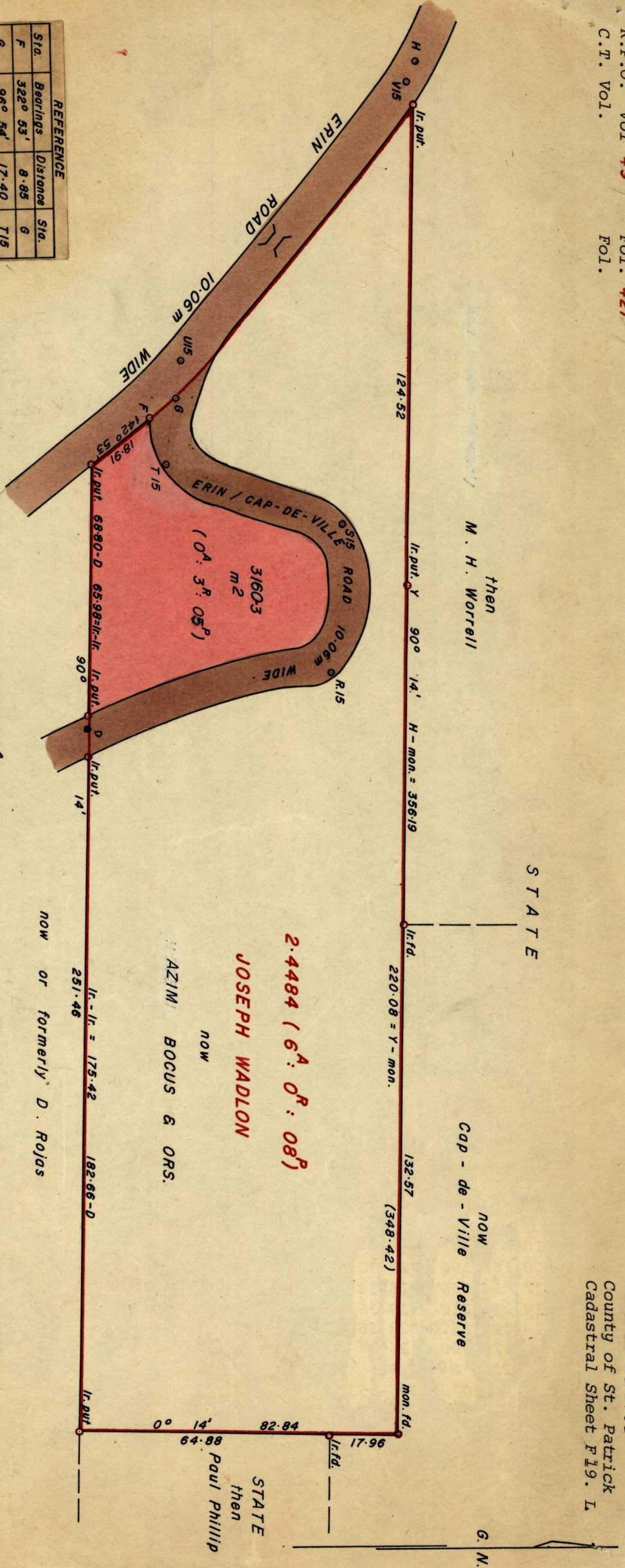


1053

643

Sta.	Bearings	Distance	Sta.
F	322° 53'	8.85	G
G	96° 54'	17.40	T15
T15	18° 36'	48.16	S15
S15	94° 02'	37.34	R15
R15	166° 07'	65.22	D
G	276° 54'	10.08	U15
U15	308° 26'	92.94	V15
V15	293° 44'	5.29	H



Approved
Director of Surveys
85-9-17

Note: To obtain compass bearings subtract 14 minutes.
Plan of a Parcel of land coloured pink in the Ward of La Brea
Containing three thousand, one hundred and sixty point three square metres
Surveyed by me, with due authority, in December 1981
I certify that I have complied with rule 76 under section 14 (2) (d) of the
Land Surveyors' Ordinance 1952, and that this plan is correct.
Checked by *AS 109/1/b*.....
Entered

.....
Land Surveyor, Trinidad 27th August 1982

SCALE - 1:1250
Distances are in metres

30	22	55	8	20
22	19	30	12	28
4		0	28	46
		T15	276° 40'	
		T15		
4		239.4	28	46
18	14	214	18	32
30	24	189	8	20
32		169	0	18
30	27	139	4	20
	21	99	10	
28	19	89	12	22
28	10	39	21	22
32	15	22	16	18
	21	0	10	
		S15	198° 22'	
		S15		
21		185.6	10	
28	14	158	17	22
18	8	136	24	32
12	4	120	28	38
	6	106	26	44
	9	86	23	41
	12	61	19	38
	15	40	16	35
	17	36	15	33
24		16	9	26
29		0	4	
		R15	273° 48'	
		R15		
		410.2	4	
21		394	9	28
12		376	18	38
4		360	26	46
14	2	355	30	48
4		335	26	46
8	6	310	22	42
18	16	210	12	32
18	17	200	13	32
20	16	190	14	30
17	14	160	16	33
17	11	110	19	36
14	9	86.0 = D	23	36
	7	60	25	
23		0	9	
		Q15	345° 53'	

ERIN GAP - DE-VILLE ROAD now widened to 50 Links

		W15		
4		294.3		36
16		240	2	
23		100	7	27
27		H = 26.3	8	23
27	25	0	8	23
		V15	293° 30'	
		V15		
27	25	462.0	8	23
26	20	400	20	24
		208	5	
		185	5	
		169		
24	21	100	8	26
		0	8	27
		U15	308° 12'	
		U15		
23		136.6	9	27
		104		
33		100	17	
		95		
30		G = 86.5	2	20
30	22	55	8	20

Bearings are Compass
Distances are in links