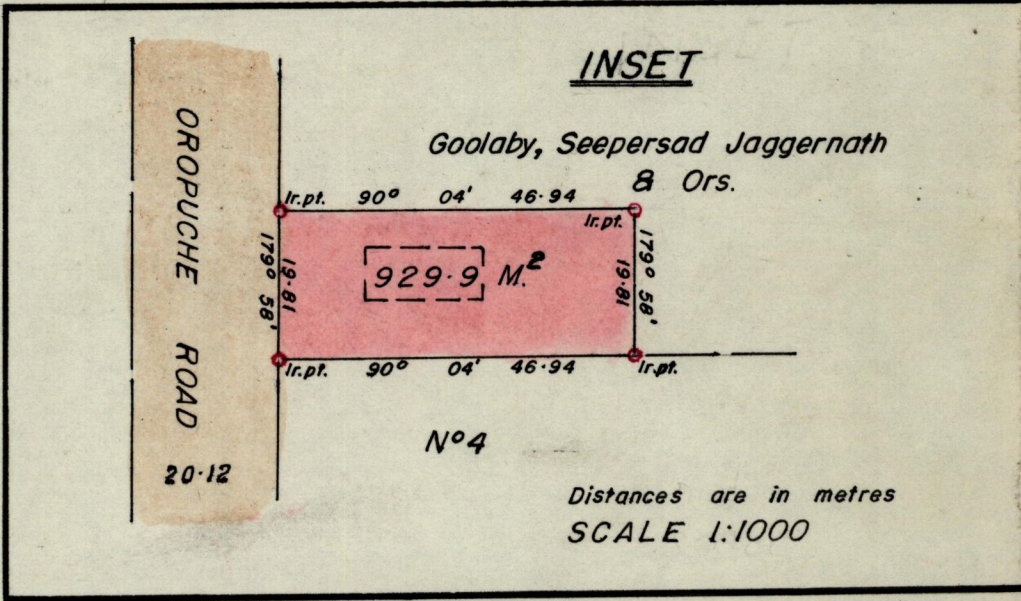
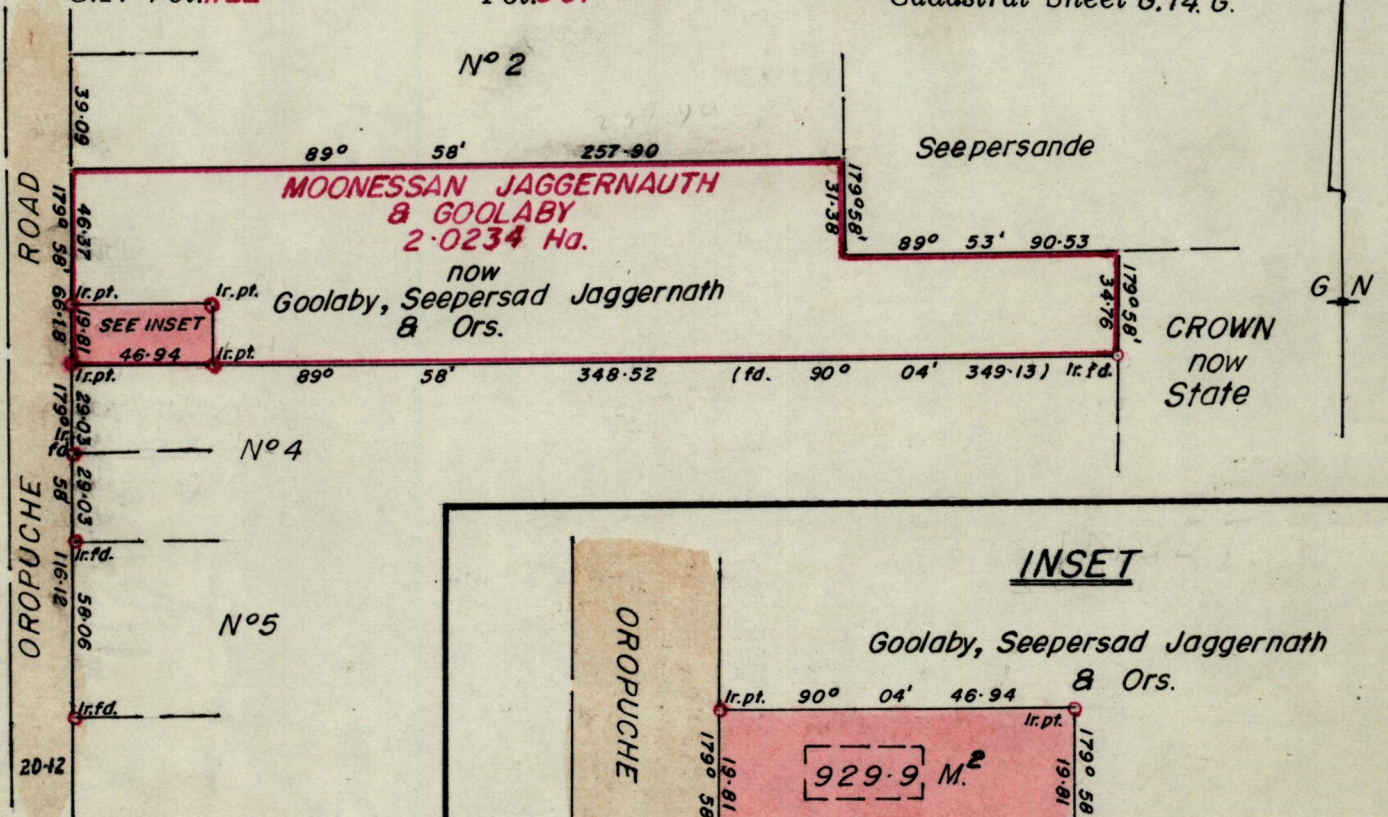


No 11622

R.P.O. Vol. 628
C.T. Vol. 1122

Fol. 273
Fol. 531

Ward of Moruga
County of Victoria
Cadastral Sheet G.14 G.



Distances are in metres
SCALE 1:1000

Approved
Director of Surveys

85.3.08

SCALE 1:2500

Note: To obtain compass bearings add/subtract 2 minutes Distances are in metres

PLAN of a Parcel of land coloured pink in the Ward of Moruga

Containing nine hundred and twenty nine point nine metres sq.

Surveyed by me, with due authority, in February 1984

I certify that I have complied with rule 76 under section 14(2)(d) of the Land Surveyors' Ordinance 1952, and that this plan is correct.

Checked by P. Beaulieu 85/03/08 Gallicharan

Entered Land Surveyor, Trinidad 21/2/1984