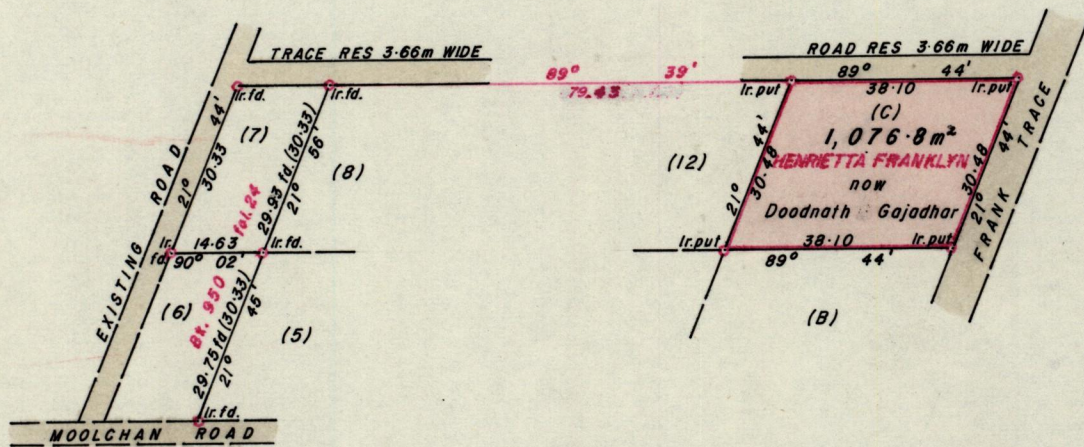


No 12812

R.P.O. Vol. 175
C.T. Vol. 518

Fol. 369
Fol. 479

Ward of Tamana
County of St. Andrew
Cadastral Sheet C.21.P



Approved

K.B. Joseph
Director of Surveys
85.3.06

Bearings are grid, based on solar observations

SCALE 1:1250

Note: To obtain compass bearings add/subtract 16

minutes

Distances are in Metres

PLAN of a Parcel of land coloured pink in the Ward of Tamana
Containing one thousand and seventy six point eight square metres

Surveyed by me, with due authority, in March 1983

I certify that I have complied with rule 76 under section 14(2)(d) of the
Land Surveyors' Ordinance 1952, and that this plan is correct.

Checked by *H.S. 2.21*

Hugo Somarsif
Land Surveyor, Trinidad
19 83

Entered

Land Surveyor, Trinidad