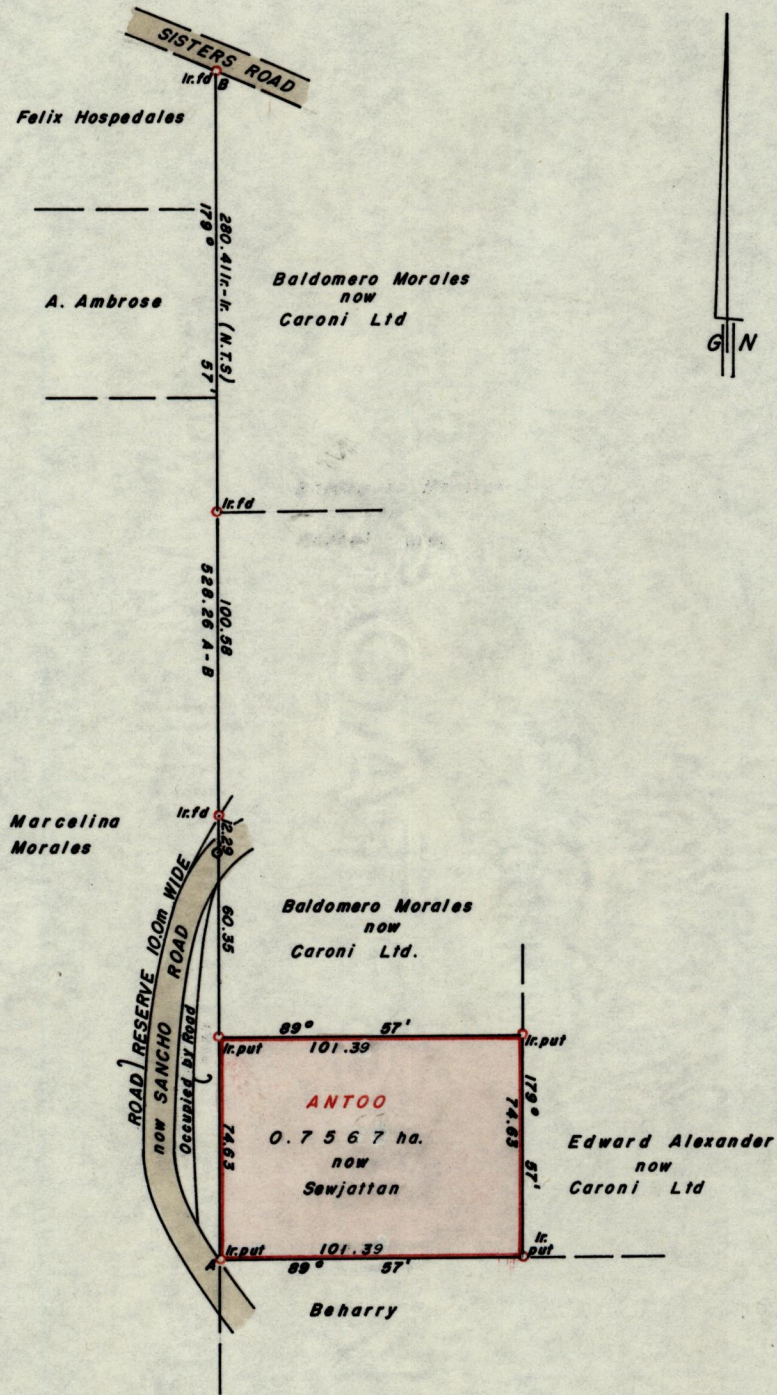


No 3769

R.P.O. Vol. 82  
C.T. Vol.

Fol. 455  
Fol.

Ward of Savana Grande  
County of Victoria  
Cadastral Sheet D.24.N



Approved

*K.B. Joseph*  
Director of Surveys  
85.2.25

SCALE 1:2500

Note: To obtain compass bearings add/subtract 3 minutes Distances are in Metres

PLAN of a Parcel of land coloured pink in the Ward of Savana Grande  
Containing zero point seven five six seven hectares

Surveyed by me, with due authority, in April 1984

I certify that I have complied with rule 76 under section 14(2)(d) of the  
Land Surveyors' Ordinance 1952, and that this plan is correct.

Checked by *85.2.25*

*Shy Sonaraj*

Entered

Land Surveyor, Trinidad *26th September 1984*