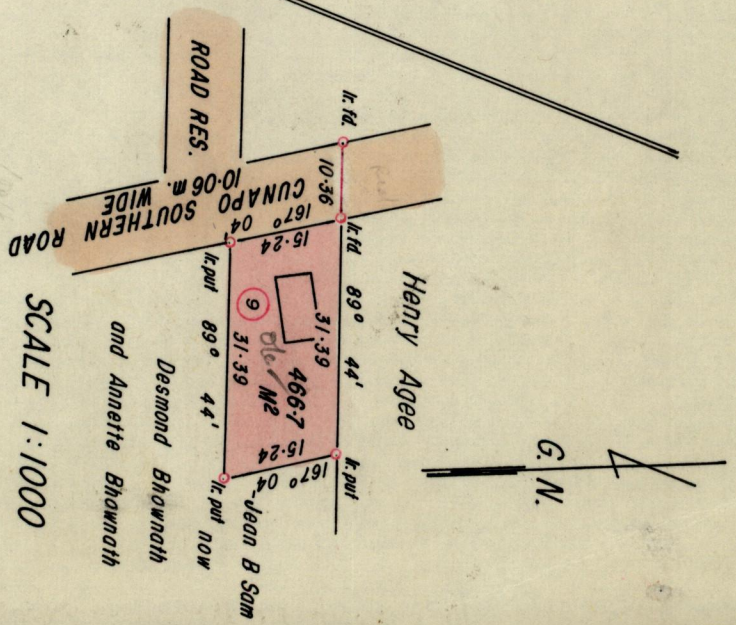
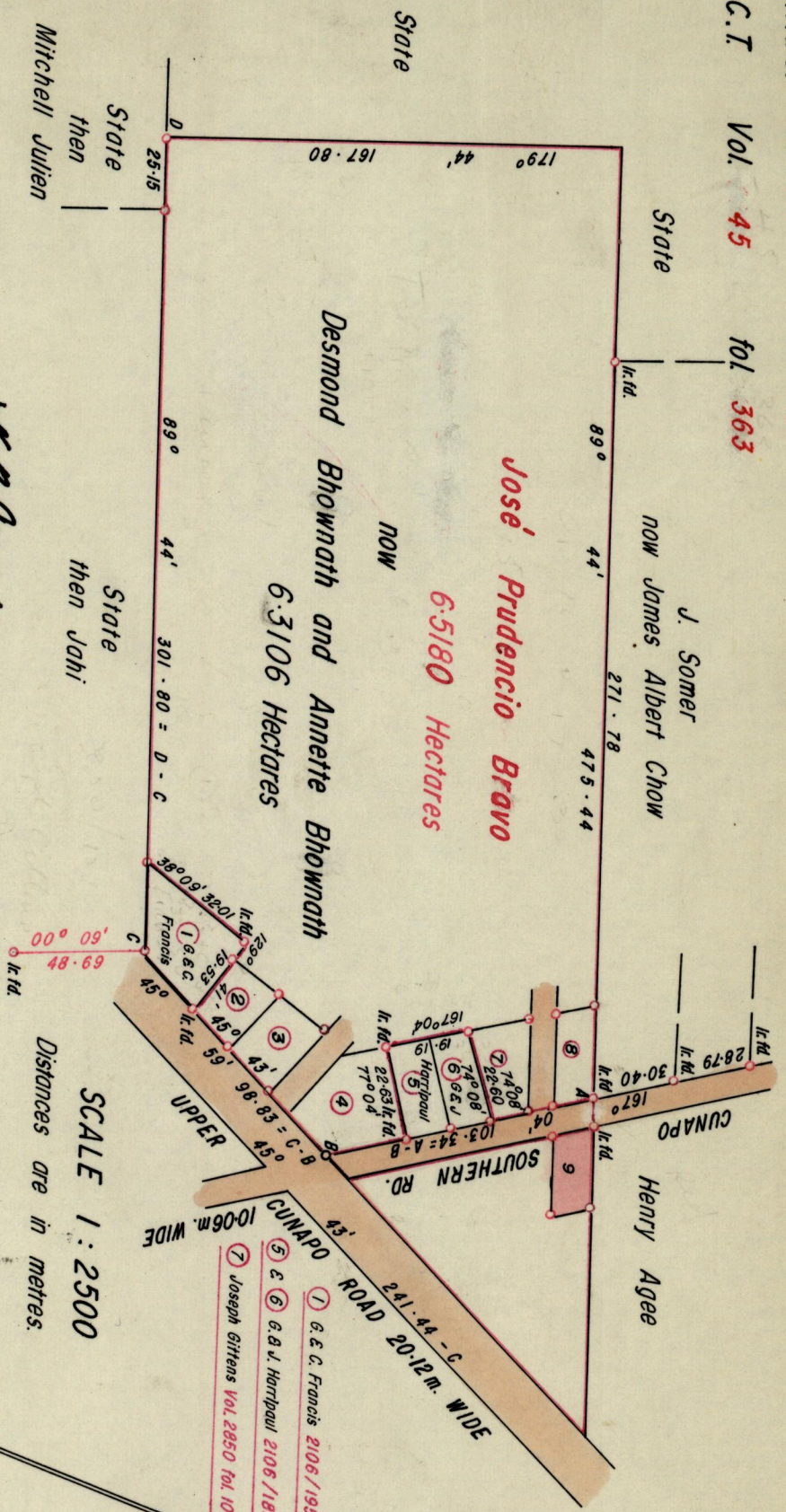


R.P.O. Vol. 34 fol. 525
C.T. Vol. 45 fol. 363

See Remaining Portion Plan Bk. 1003 fol. 128

Ward of Turure.
County of St. Andrew.
Cadastral Sheet E. 2. E.



Approved by *J. B. Lewis*
Director of Surveys
85.1.25

To obtain compass brgs. add 16 mins.

Plan of a Parcel of land coloured pink in the Ward of Turure. Containing four hundred and sixty six point seven square metres. Surveyed by me, with due authority in August 1982. I certify that I have complied with rule 76 under Section 14(2)(d) of the Land Surveyors' Ordinance 1952, and that this plan is correct.

Checked by *A.S. 1.25*

Savina Clark

Entered... Land Surveyor, Trinidad. 21st October 1982