

No 48964

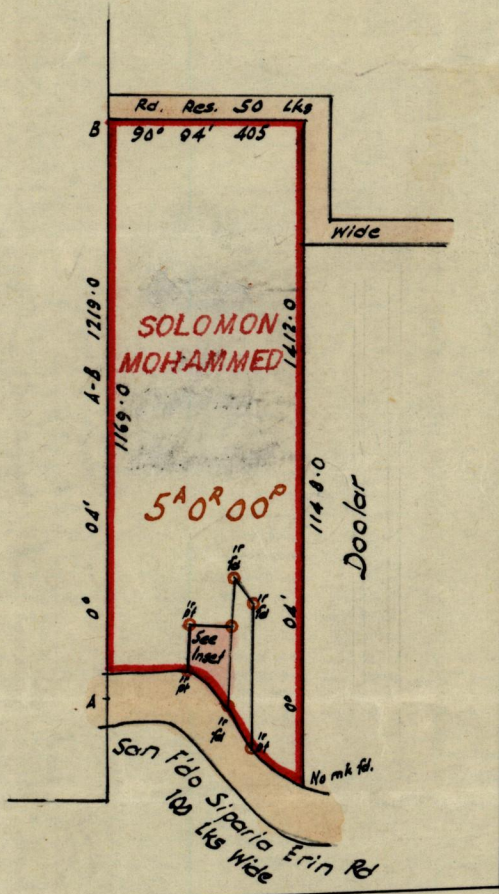
R.P.O. Vol. 99
C.T. Vol. 1273

Fol. 203
Fol. 1

Ward of Siparia
County of St. Patrick
Cadastral Sheet G.12.P

GN

H. B. Francois



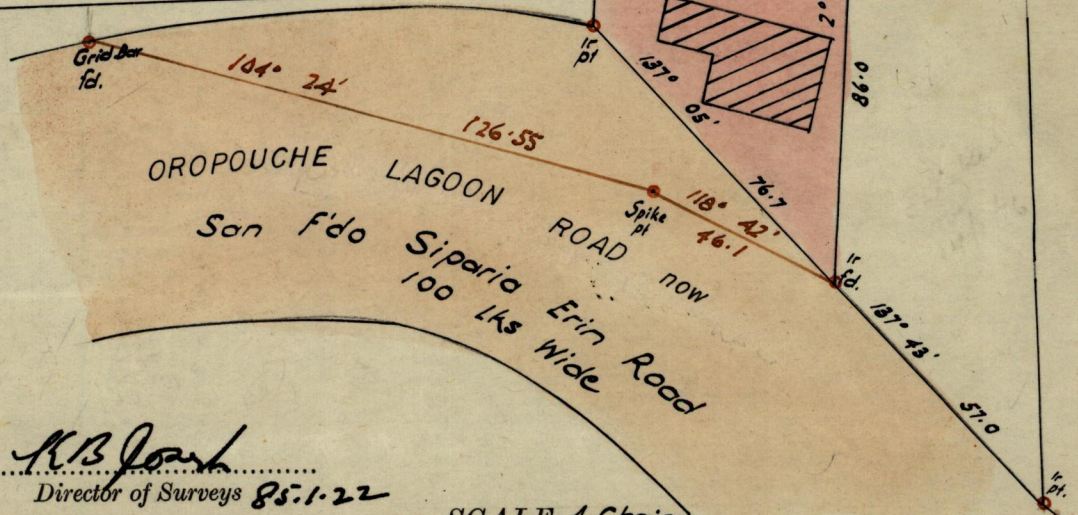
NSET

SCALE 1:500

Dist. are in Ft.

Solomon Mohammed

Solomon Mohammed



CT Vol. 2295
Fol. 141

Approved

H.B. Francois

Director of Surveys 85.1.22

Bearings are Grid based on Azimuth by Solar Obs.

Note: To obtain compass bearings add/subtract 4 minutes

PLAN of a Parcel of land coloured pink

Containing Five thousand sq. ft

Surveyed by me, with due authority, in May 1980

I certify that I have complied with rule 76 under Section 14 (2) (d) of the Land Surveyors' Ordinance 1952, and that this plan is correct.

Checked by *AW* 85/01/21

Entered.....

SCALE 4 Chains

Distances are in Lks

in the Ward of Siparia

A. H. Out

Land Surveyor, Trinidad 5th June 1980