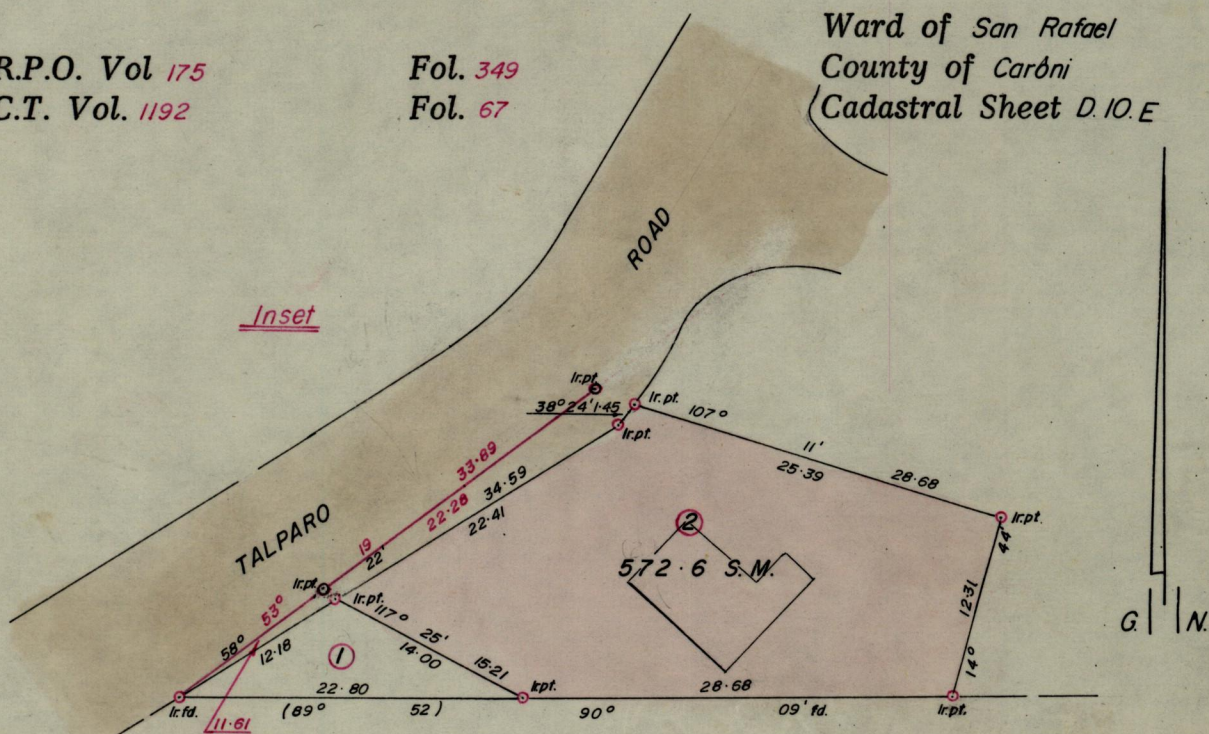


R.P.O. Vol 175
C.T. Vol. 1192

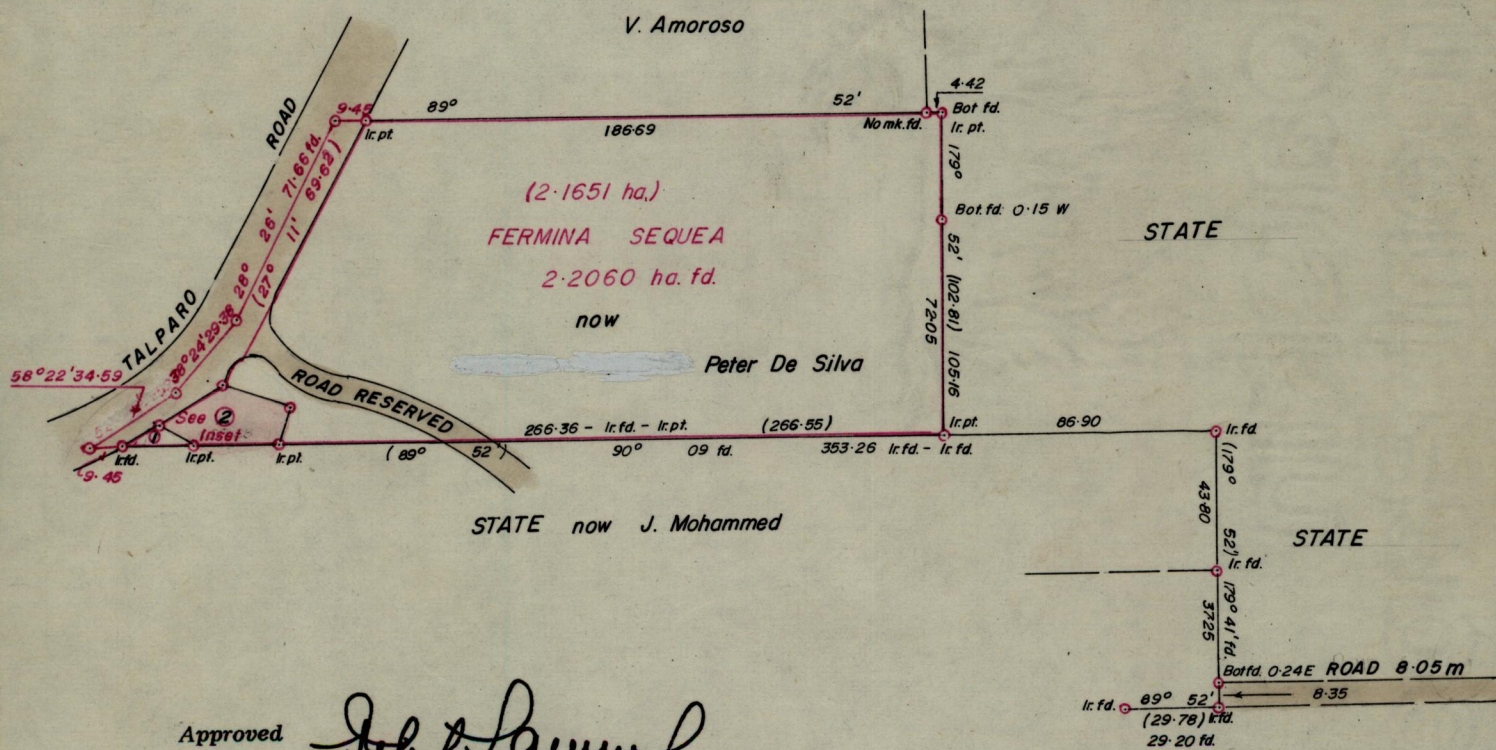
Fol. 349
Fol. 67

Ward of San Rafael
County of Caróni
Cadastral Sheet D.10.E



SCALE 1:500

Distances are in Metres



Approved

John Samuel
Director of Surveys

f3.07.11

SCALE 1:2500

minutes

Distances are in Metres

Note: To obtain compass bearings add/subtract

PLAN of a Parcel of land coloured Pink in the Ward of San Rafael
Containing five hundred and seventy two point six square metres
Surveyed by me, with due authority, in February 1981

I certify that I have complied with rule 76 under section 14(2)(d) of the
Land Surveyors' Ordinance 1952, and that this plan is correct.

Checked by *P Beard* f3/07/08

Entered

Land Surveyor, Trinidad

A. Deenan
27 September 1982