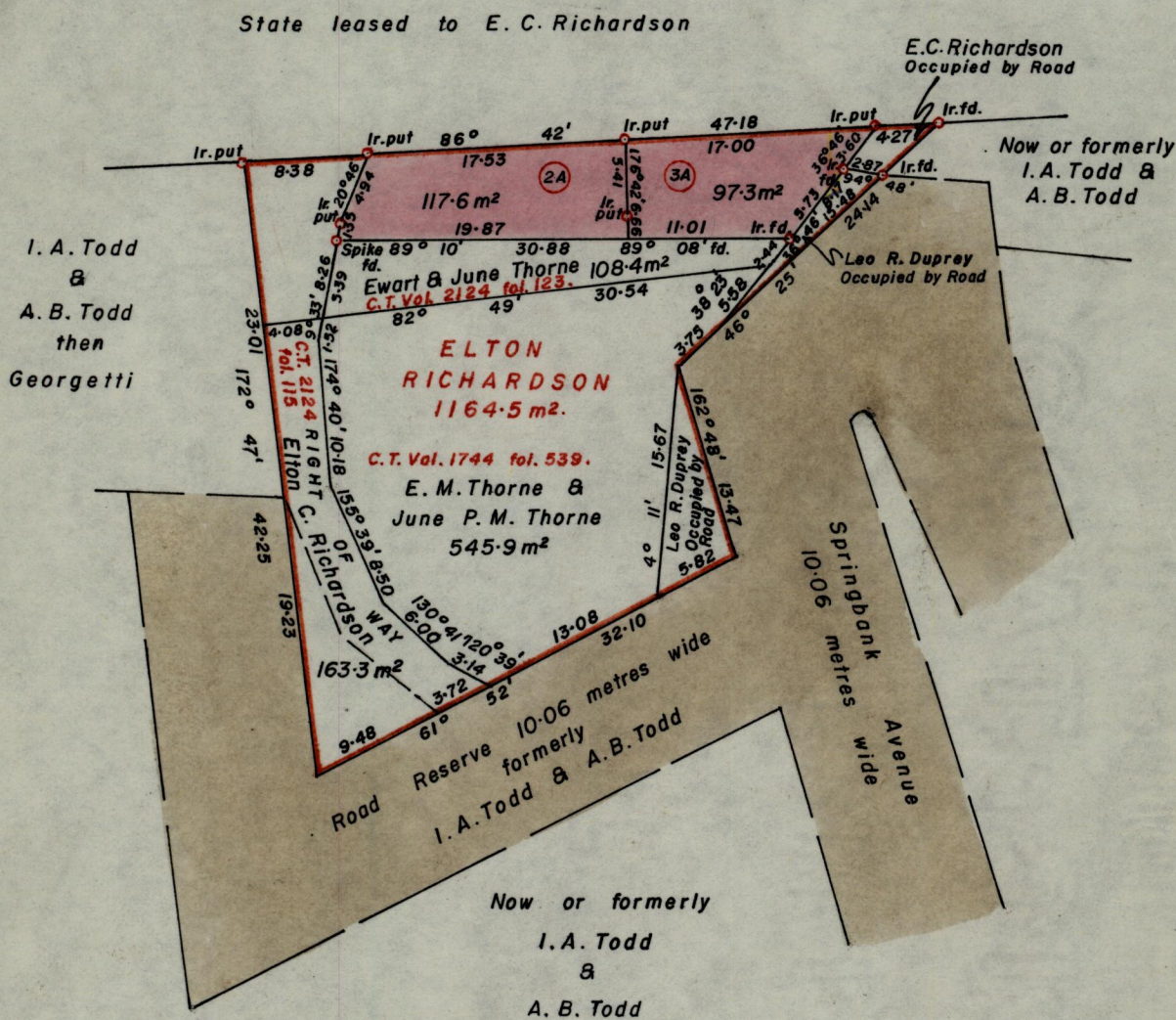


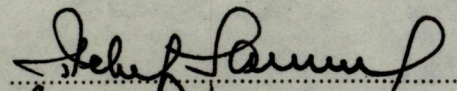
No 8106

R.P.O. Vol. 114
C.T. Vol. 1232

Fol. 17
Fol. 165

Ward of St. Ann's
County of St. George
Cadastral Sheet 13E A.20.C.
1/c & 3/a



Approved 
 83.06.23 Director of Surveys

SCALE 1 - 500.

Note: To obtain compass bearings ~~add~~/subtract 2 minutes Distances are in metres.

PLAN of 2 Parcels of land coloured pink in the Ward of St. Ann's
 Containing Together Two hundred and fourteen point nine square metres.
 Surveyed by me, with due authority, in January 1983.

I certify that I have complied with rule 76 under section 14(2)(d) of the
 Land Surveyors' Ordinance 1952, and that this plan is correct.

Checked by P. Brand 83/06/23
 Entered Land Surveyor, Trinidad 25th February 1983.