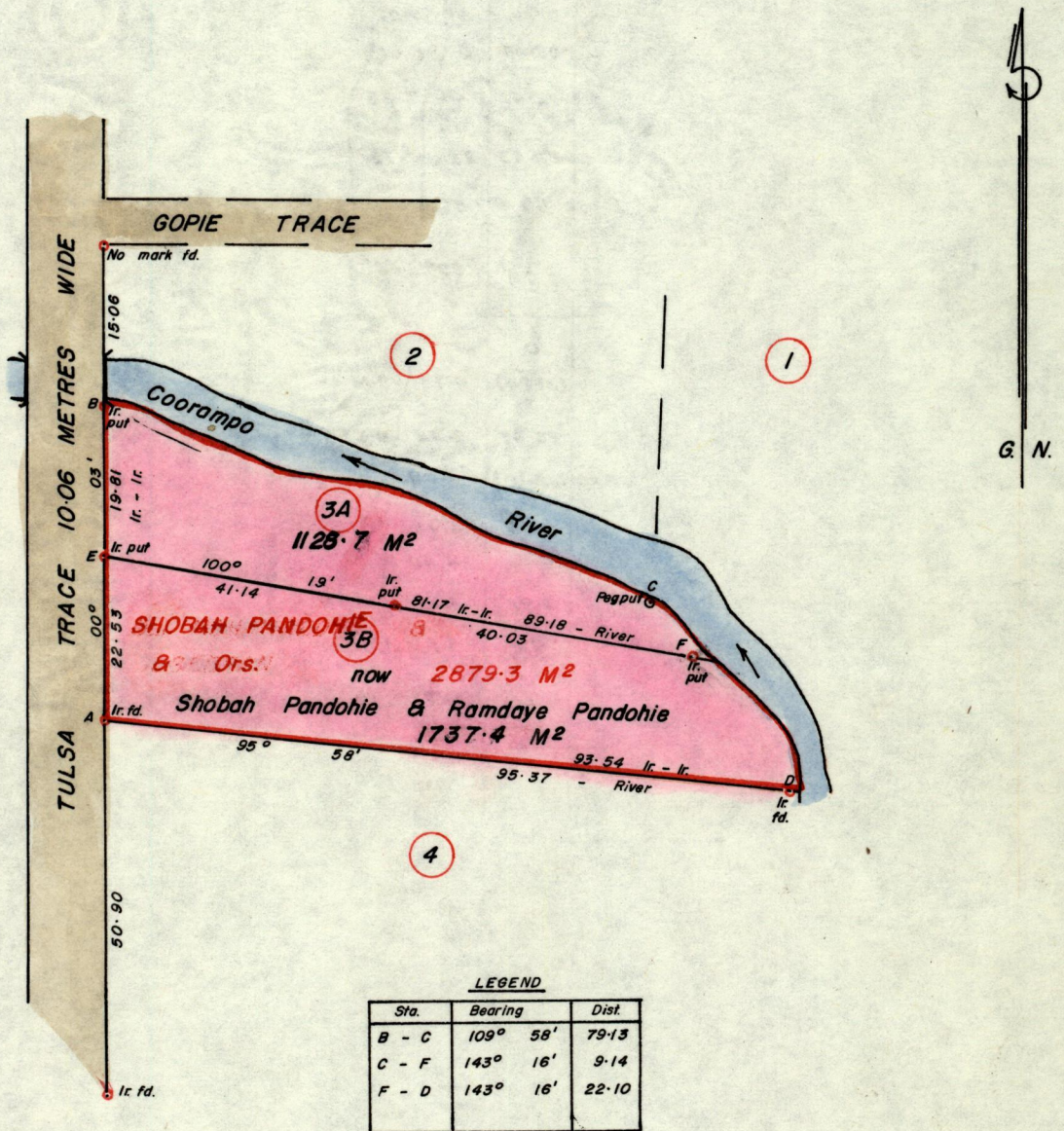


No 6697

R.P.O. Vol. 149
C.T. Vol. 2587

Fol. 291
Fol. 57

Ward of Siparia
County of St. Patrick
Cadastral Sheet G. 13. E.



Approved *John Samuel*
83. 04. 82 Director of Surveys

Bearings are based on Solar Observations

Note: To obtain compass bearings add/subtract

SCALE ~ 1/1000

minutes

Distances are in Metres

PLAN of 2 Parcels of land coloured pink in the Ward of Siparia
Containing together two thousand, eight hundred and sixty six point one square metres
Surveyed by me, with due authority, in November, 1982

I certify that I have complied with rule 76 under section 14(2)(d) of the
Land Surveyors' Ordinance 1952, and that this plan is correct.

Checked by *83/04/82*

W. S. L...

Entered

Land Surveyor, Trinidad 12. 4. 1983

Original - Plan E. H. 155

