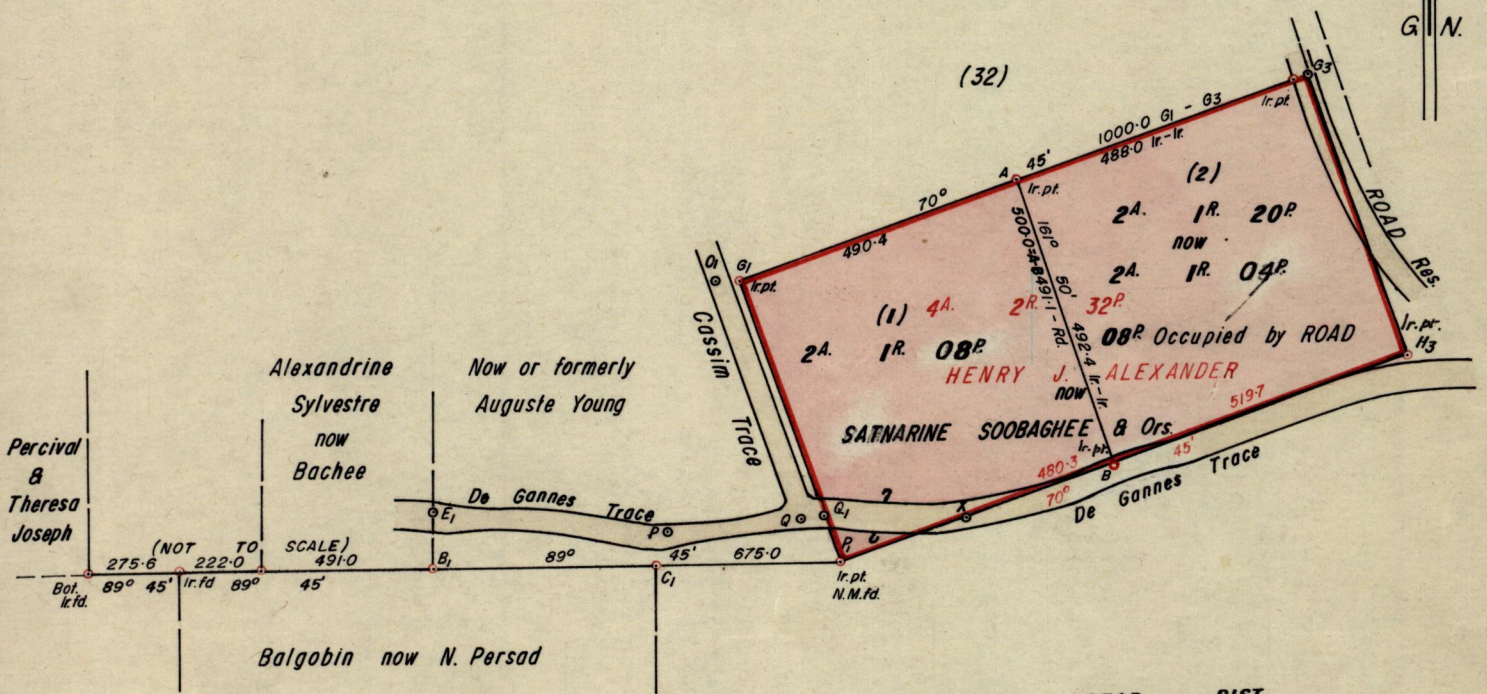


No. 49922

R.P.O. Vol. 113
C.T. Vol.

Fol. 449
Fol.

Ward of Tamana
County of St. Andrew
Cadastral Sheet E. I. C. & D.



| STA | BEAR. | DIST |
|---------------------------------|----------|-------|
| B ₁ - E ₁ | 359° 45' | 91.5 |
| E ₁ - P | 95° 16' | 390.1 |
| P - Q | 84° 43' | 224.4 |
| Q - Q ₁ | 84° 43' | 35.9 |
| Q ₁ - P ₁ | 160° 45' | 81.7 |
| Q - O ₁ | 341° 03' | 421.3 |
| O ₁ - G ₁ | 89° 45' | 35.3 |
| P ₁ - Q ₁ | 340° 45' | 81.7 |
| Q ₁ - G ₁ | 340° 45' | 418.3 |
| G ₃ - H ₃ | 160° 45' | 500.0 |
| H ₃ - X | 250° 45' | 776.4 |
| X - P ₁ | 250° 45' | 223.7 |
| Q ₁ - X | 90° 49' | 238.1 |

Approved

John Samuel
Director of Surveys

15.5.81

SCALE 1/2500

Note: To obtain compass bearings add/subtract 15 minutes Distances are in Lks

PLAN of a Parcel of land coloured pink in the Ward of Tamana

Containing together four acres two roods and ~~twelve~~ four perches

Surveyed by me, with due authority, in November 1979

I certify that I have complied with rule 76 under Section 14 (2) (d) of the Land Surveyors' Ordinance 1952, and that this plan is correct.

Checked by *Hankar* 15/5/81

Winston Ramcharan

Entered.....

Land Surveyor, Trinidad 3rd February 1981