

1153

L. & S.-54

433(1)

No 5589

R.P.O. Vol. 81

Fol. 369

C.T. Vol. 823

Fol. 291

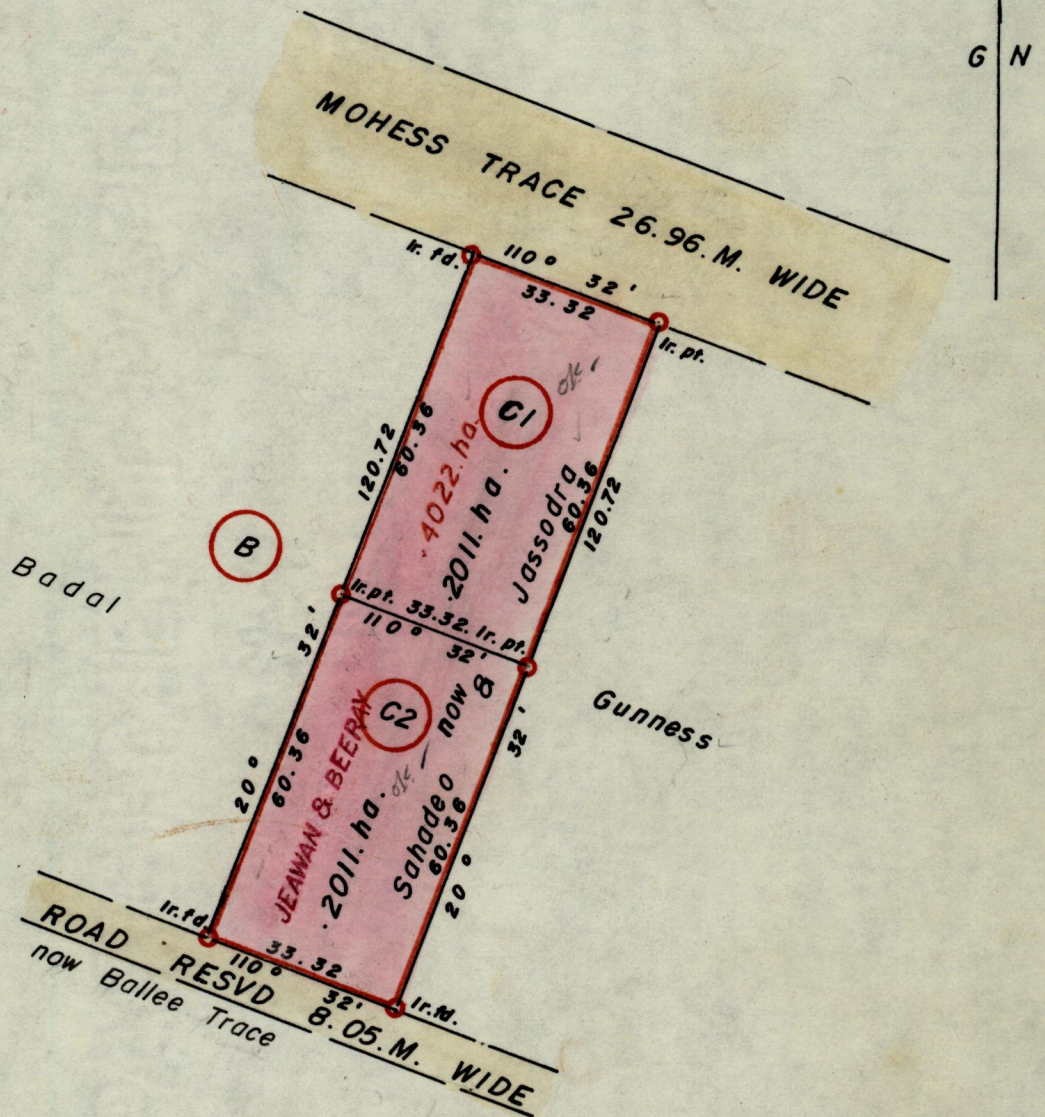
(Vol. 2109 Fol. 57B)

General Plan

Ward of Siparia

County of St Patrick

Cadastral Sheet G.13.F.86



Approved

John Samuel
Director of Surveys

SCALE 1 : 1250

Note: To obtain compass bearings ~~add~~/subtract 2 minutes Distances are in metres

PLAN of ² Parcel of land coloured pink in the Ward of Siparia

Containing together point four zero two two hectare

Surveyed by me, with due authority, in Feb. 1982

I certify that I have complied with rule 76 under section 14(2)(d) of the Land Surveyors' Ordinance 1952, and that this plan is correct.

Checked by *83/04/08*

Land Surveyor, Trinidad

Pollicharan
25/3/1982