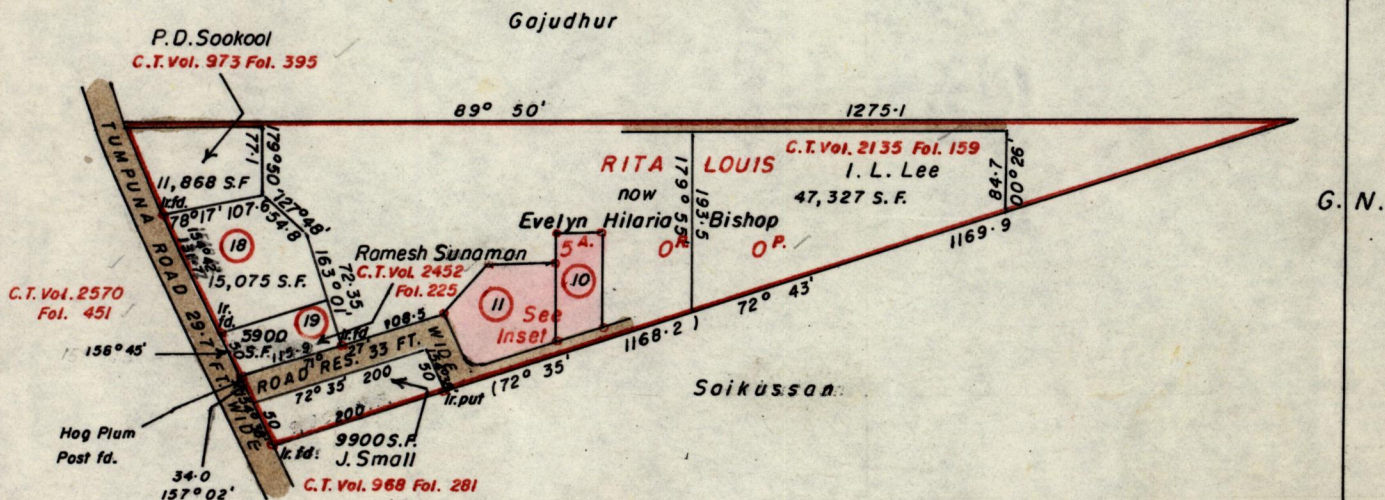


No 640

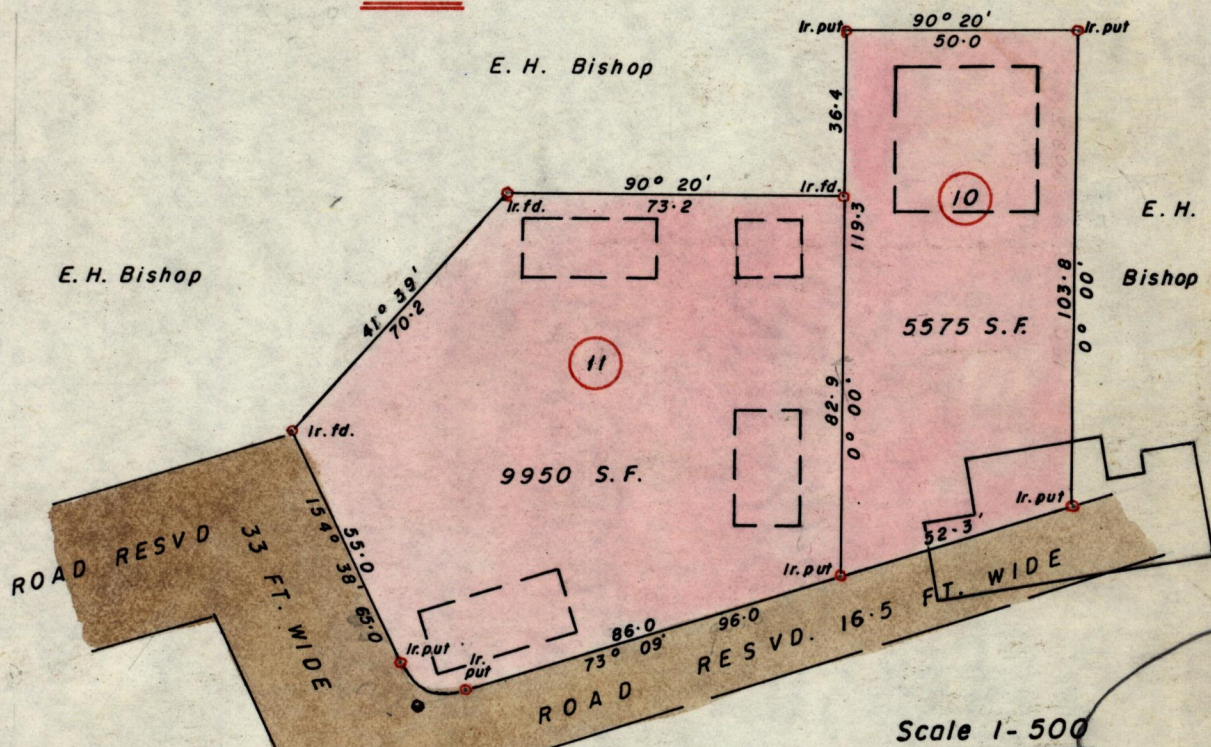
R.P.O. Vol. 6  
C.T. Vol. 666

Fol. 273  
Fol. 179

Ward of Arima  
County of St. George  
Cadastral Sheet B. 25. E



INSET



Approved

*John Samuel*  
 Director of Surveys  
 12.5.81

SCALE 1 - 2500

Note: To obtain compass bearings add/subtract 10 minutes Distances are in feet

PLAN of 2 Parcelsof land coloured pink in the Ward of Arima

Containing together Fifteen thousand five hundred and twenty-five square feet

Surveyed by me, with due authority, in November 1980

I certify that I have complied with rule 76 under section 14(2)(d) of the Land Surveyors' Ordinance 1952, and that this plan is correct.

Checked by *Hankar* 21/5/81

Entered

Land Surveyor, Trinidad

*8. December 1980*