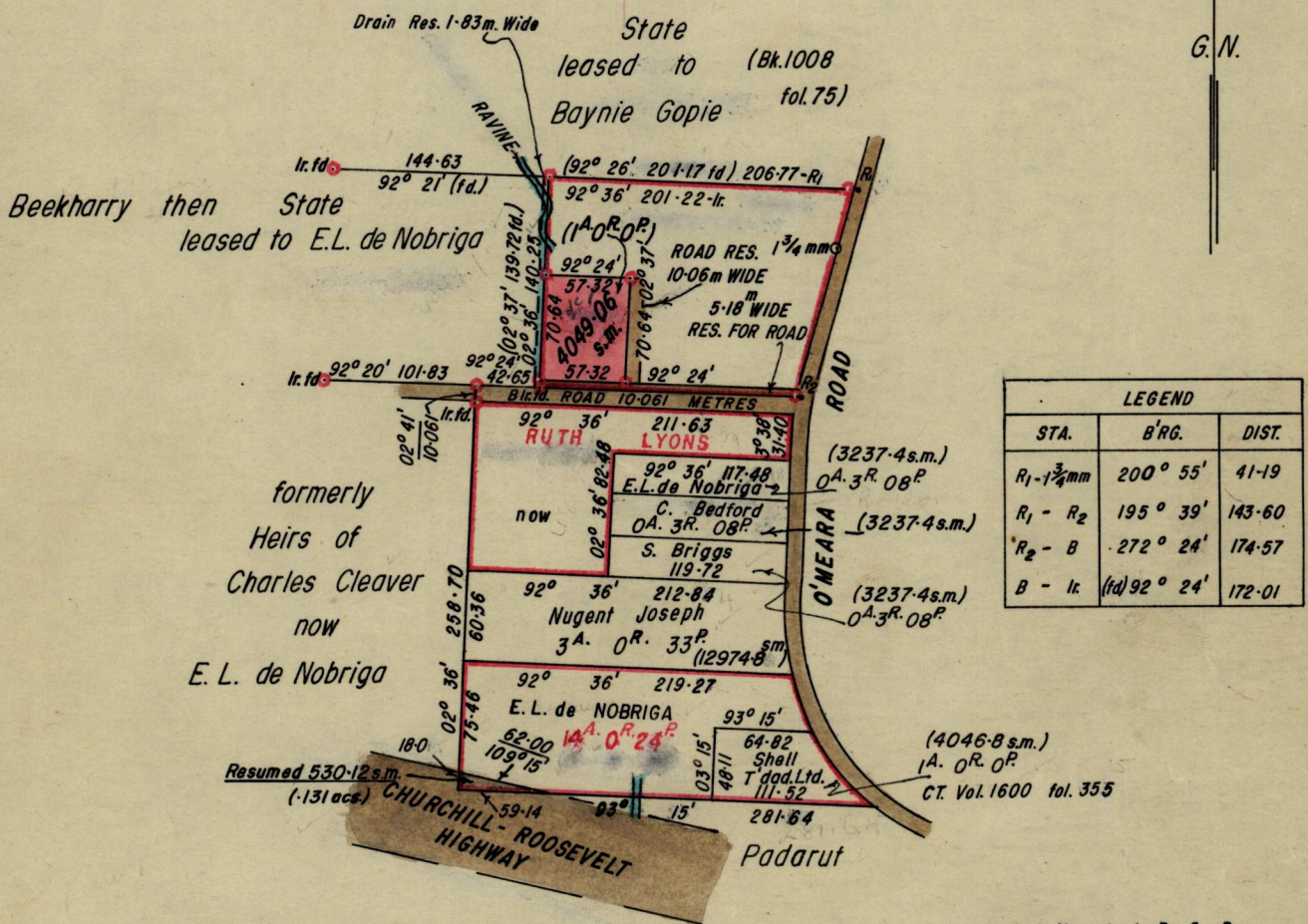
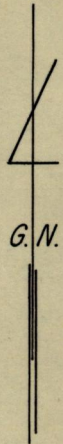


No 35918

R.P.O. Vol. 3
C.T. Vol. 1010

Fol. 185
Fol. 111

Ward of Arima.
County of St. George
Cadastral Sheet B.24. H.



LEGEND		
STA.	B'RG.	DIST.
R ₁ -1 3/4 mm	200° 55'	41-19
R ₁ - R ₂	195° 39'	143-60
R ₂ - B	272° 24'	174-57
B - kr	(fd) 92° 24'	172-01

NOTE: Spike put at R₁ & R₂

See: Bk. 963 fol. 45

Approved *Joseph Samuel*
F3.07.13. Director of Surveys

o Denotes Iron put, except where otherwise stated.

SCALE 1 : 5000

Note: To obtain compass bearings add/subtract 9 minutes Distances are in metres.

PLAN of a Parcel of land coloured pink in the Ward of Arima.
Containing four thousand and forty-nine point zero, six square metres. (one acre).
Surveyed by me, with due authority, in January 1982.

I certify that I have complied with rule 76 under Section 14 (2) (d) of the Land Surveyors' Ordinance 1952, and that this plan is correct.

Checked by *AS 83/01/12*

Entered Land Surveyor, Trinidad 11. 3. 1982