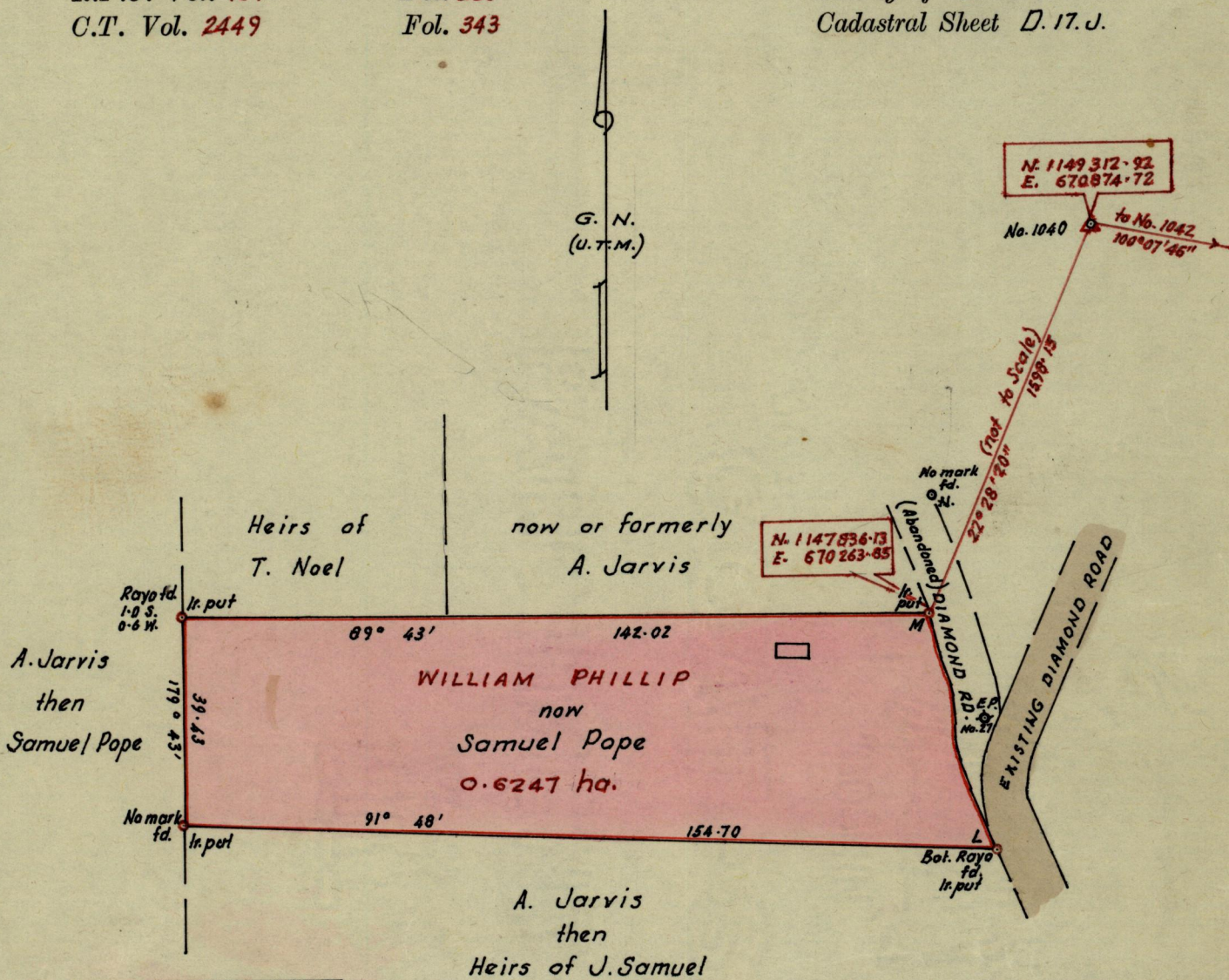


Nº 46501

R.P.O. Vol. 434
C.T. Vol. 2449

Fol. 223
Fol. 343

Ward of Couva
County of Caroni
Cadastral Sheet D. 17.J.



REFERENCE		
L - M	344° 08'	46.78
M - N	1° 55'	22.53
	M	
	46.78	0.29
	40.23	0.40
	30.18	0.80
	27.16	
	20.12	
	10.6	
	0	
	L	344° 08'

Approved

[Signature]
8.11.82 Director of Surveys

SCALE : 1/1250

Bearings are based on Trig. Stations
Note: To obtain compass bearings add ~~17~~ 17 minutes Distances are in metres

PLAN of a Parcel of land coloured pink in the Ward of Couva

Containing sixty-two ares & forty-seven square metres
Redefined

~~Surveyed~~ by me, with due authority, in February 1982.

I certify that I have complied with rule 76 under Section 14 (2) (d) of the Land Surveyors' Ordinance 1952, and that this plan is correct.

Checked by *[Signature]* 82/12/07

[Signature] ARCS.

Entered.....

Land Surveyor, Trinidad 6th December 1982