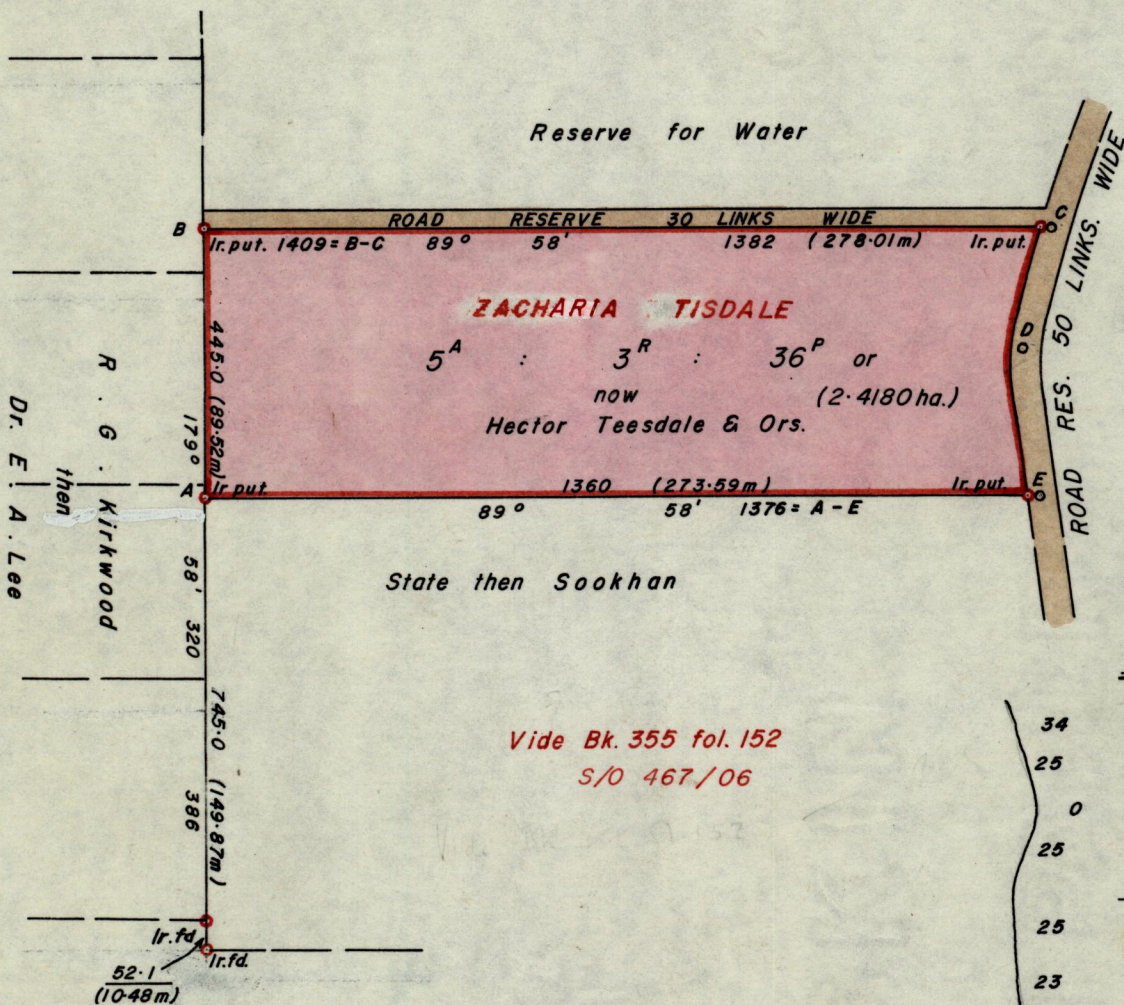


No 2588

R.P.O. Vol. 173
C.T. Vol. 2240

Fol. 157
Fol. 121

Ward of Savana Grande
County of Victoria
Cadastral Sheet G 9. L.



Approved

John R. ...
Director of Surveys
8/2/11.26

SCALE 1 : 2500

Note: To obtain compass bearings add/subtract 2 minutes Distances are in links.

PLAN of a Parcel of land coloured pink in the Ward of Savana Grande
Containing five acres three roods and thirty-six perches.
Surveyed by me, with due authority, in July 1981.

I certify that I have complied with rule 76 under section 14(2)(d) of the
Land Surveyors' Ordinance 1952, and that this plan is correct.

Checked by *...* 8/2/11/26
Entered Land Surveyor, Trinidad 19th Dec 1982