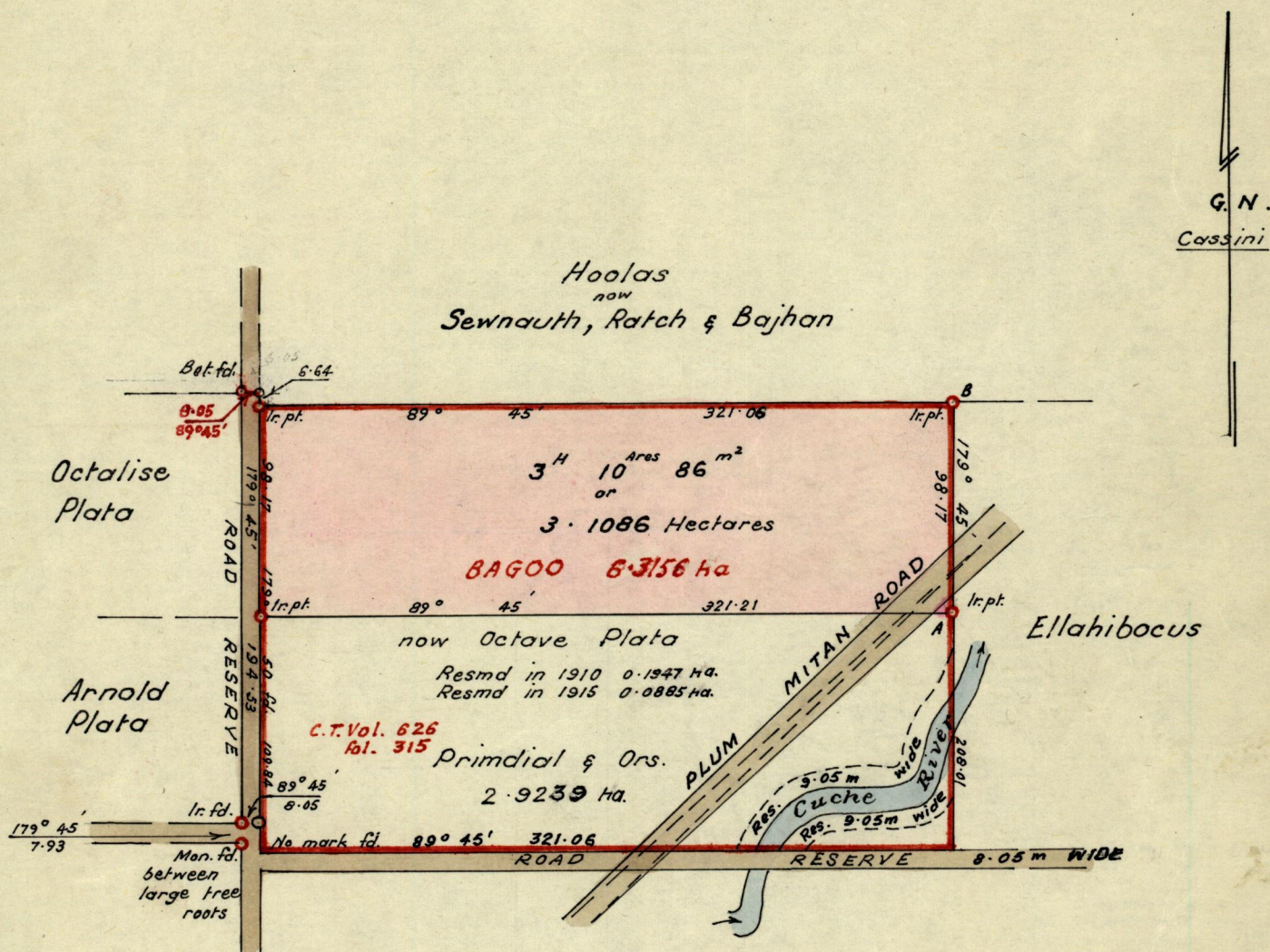


Nº 46253

R.P.O. Vol. 110
C.T. Vol.

Fol. 475
Fol.

Ward of Turure
County of St. Andrew
Cadastral Sheet E 12 G



Approved

H. B. Jones
Director of Surveys
82.10.18

SCALE 1 : 3168 (4chs. to 1m.)

Note: To obtain compass bearings add/subtract 15 minutes Distances are in metres

PLAN of a Parcel of land coloured pink in the Ward of Turure
Containing three hectares, ten ares and eighty six square metres
Surveyed by me, with due authority, in January 1982

I certify that I have complied with rule 76 under Section 14 (2) (d) of the Land
Surveyors' Ordinance 1952, and that this plan is correct.

Checked by *M. P. 82/10/18*

J. R. Jardine
Land Surveyor, Trinidad 25/2/1982

