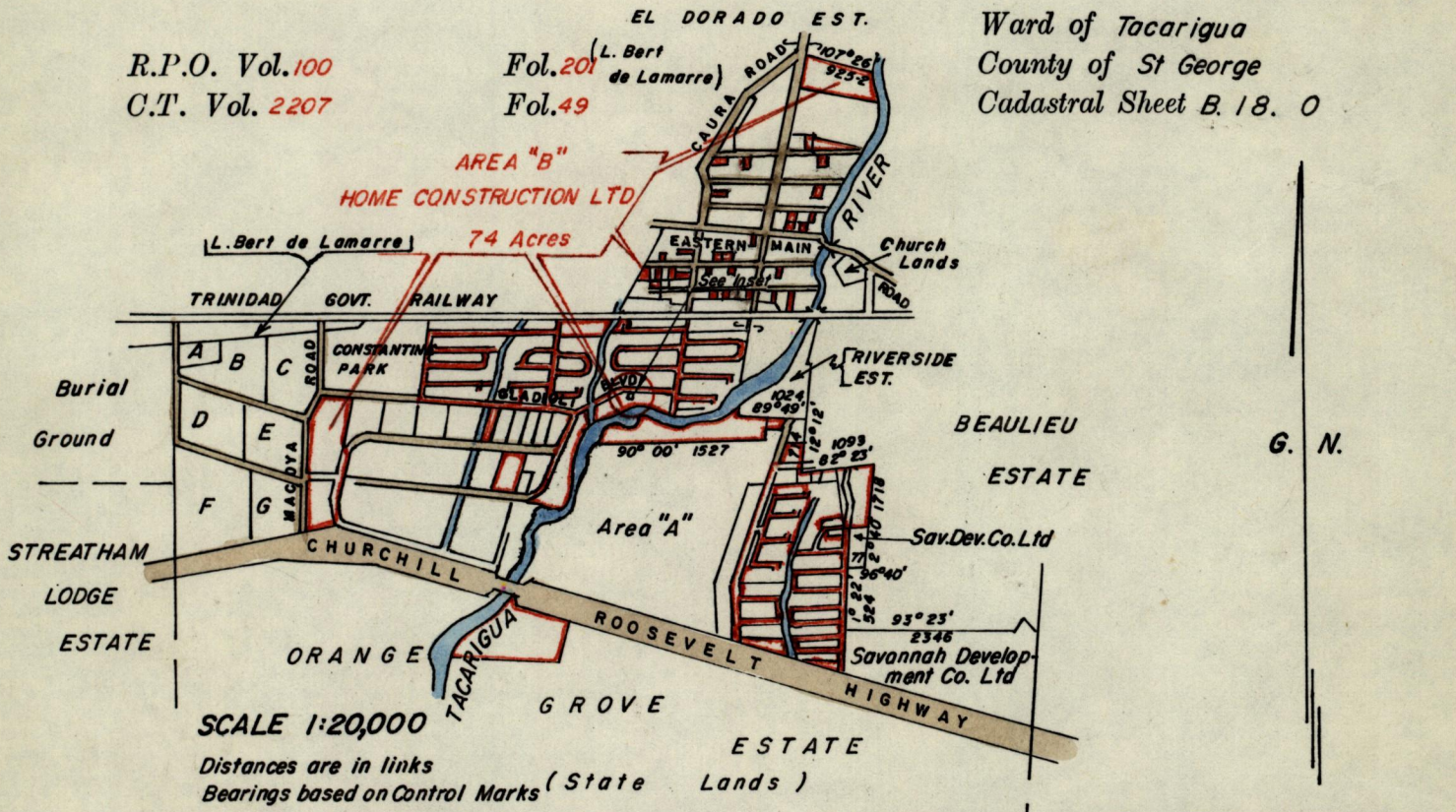


Nº 46397

R.P.O. Vol.100
C.T. Vol. 2207

Fol.20 (L. Bert de Lamarre)
Fol.49

Ward of Tacarigua
County of St George
Cadastral Sheet B. 18. 0

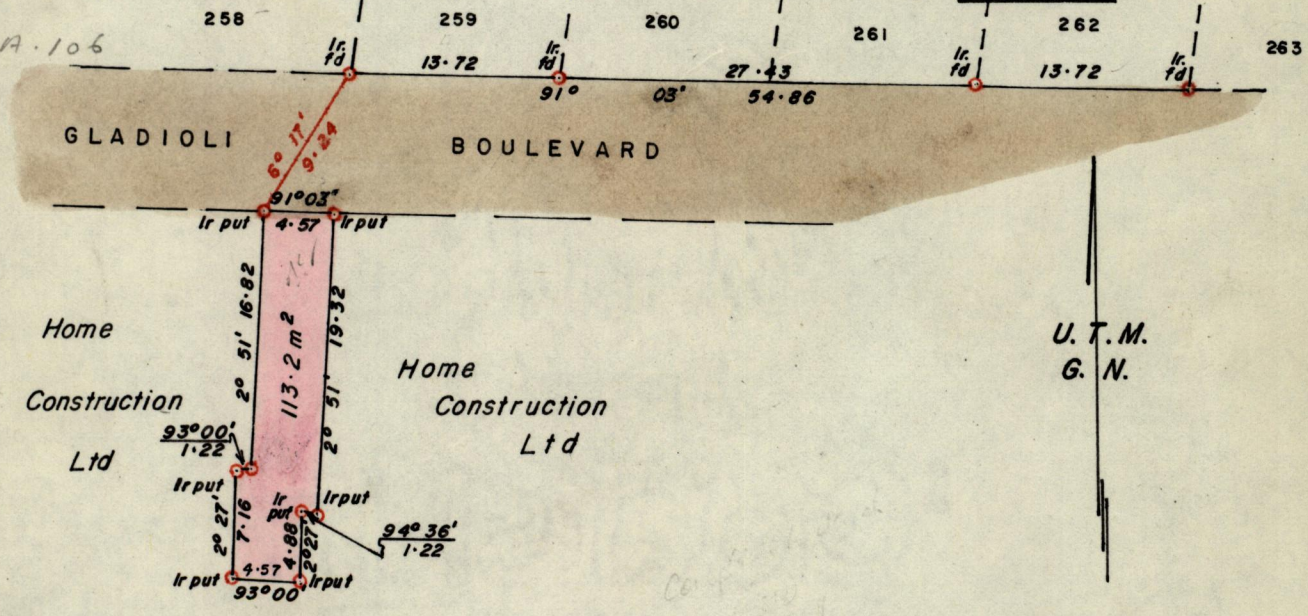


SCALE 1:20,000

Distances are in links
Bearings based on Control Marks (State Lands)

INSET

Plan P.A. 106



Approved

John Samuel
Director of Surveys

87.06.30

SCALE 1:500

Note: For true bearings add 13 minutes
To obtain compass bearings add ~~subtract~~ 22 minutes Distances are in metres

PLAN of a Parcel of land coloured pink in the Ward of Tacarigua
Containing one hundred and thirteen point two square metres
Surveyed by me, with due authority, in January 1982

I certify that I have complied with rule 76 under Section 14 (2) (d) of the Land Surveyors' Ordinance 1952, and that this plan is correct.

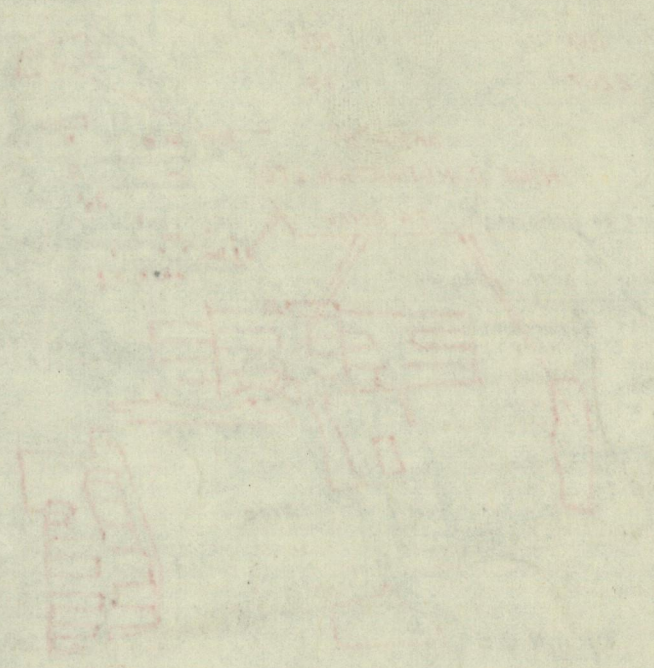
Checked by *82/06/30*

John Samuel

Entered.....

Land Surveyor, Trinidad 25th January 1982

Original on Plan P.A. 72



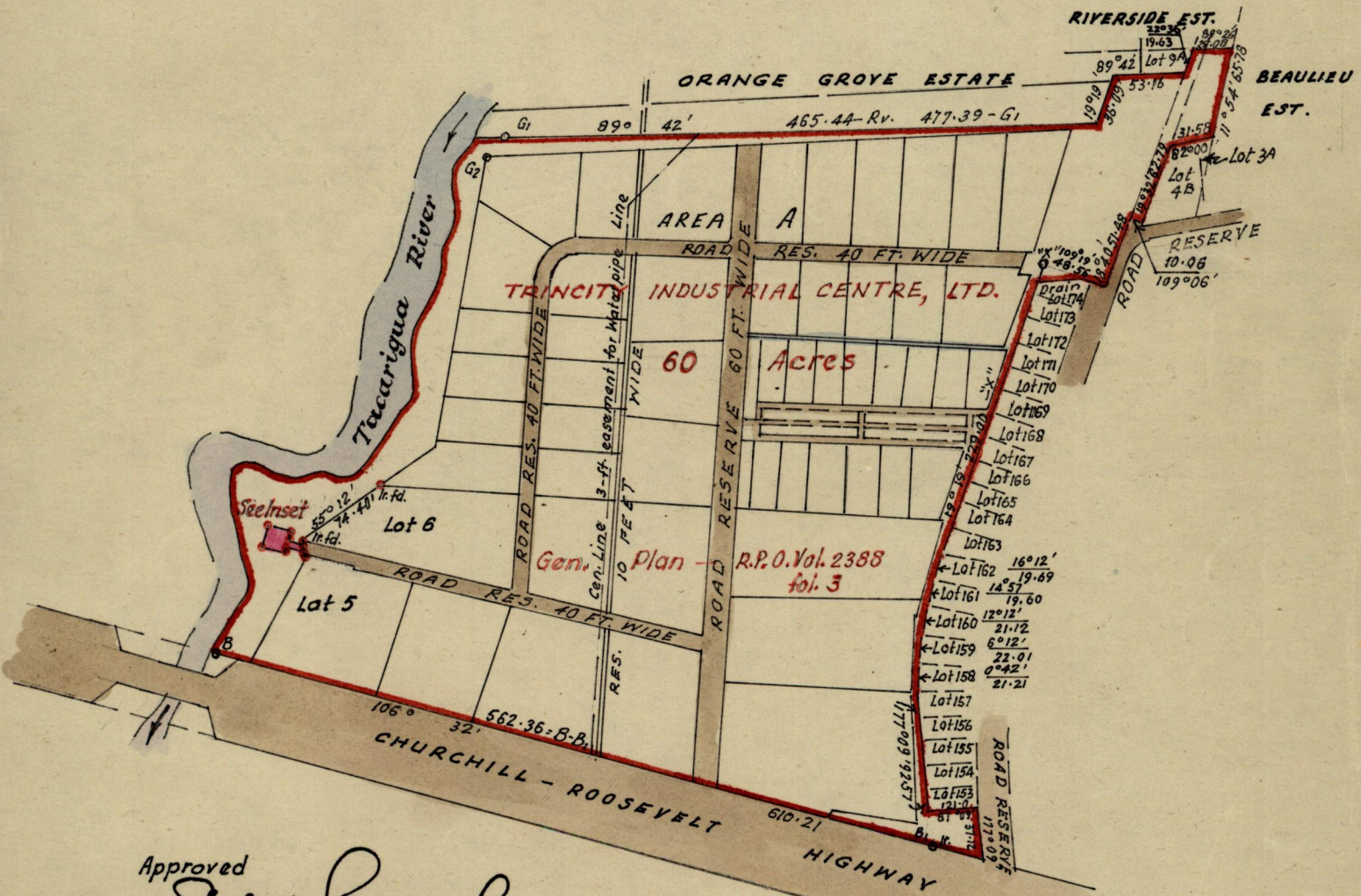
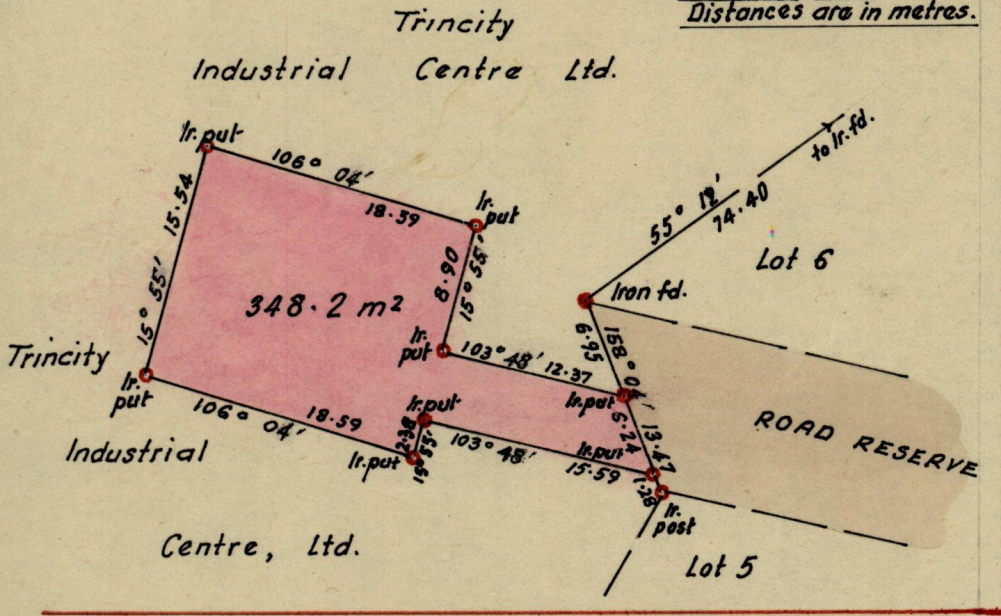
Great St. Paul
Parish Cathedral

R.P.O. Vol. 100 Fol. 201
C.T. Vol. 2207 Fol. 47

Ward of Tacarigua
County of St. George
Cadastral Sheet B.18.0.

INSET

SCALE: 1/500
Distances are in metres.



Approved
John Lawrence
Director of Surveys
20.06.20.

SCALE: 1/5000
Distances are in metres.

Note: To obtain True bearings add 18 minutes.

PLAN of a Parcel of Land coloured pink, in the Ward of Tacarigua

Containing three hundred & forty-eight point two square metres

Surveyed by me, with due authority in January 1982

I certify that I have complied with Rule 76 under Sec. 14 (2)(d) of the Land Surveyors Ordinance 1952, and that this plan is correct.

Checked by *20* 22/06/30

Entered on ----- *John Lawrence* Land Surveyor, Trinidad. ----- 15th January 1982

Original in BK 999 fol. 164
See also Plan E. H. 168

