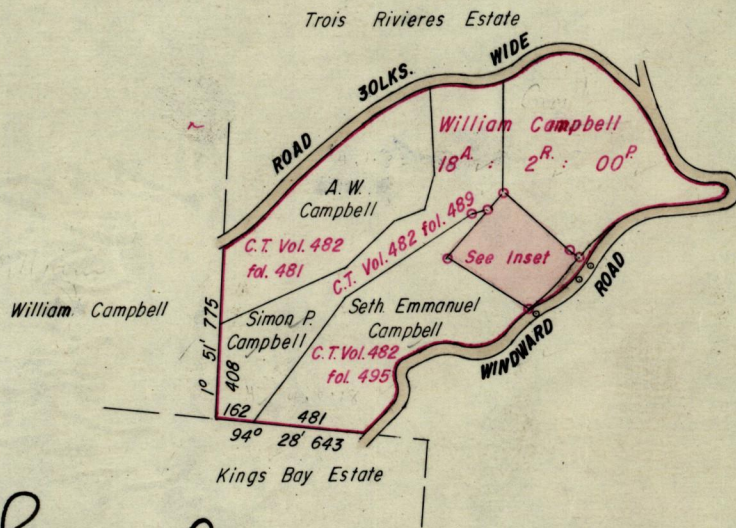
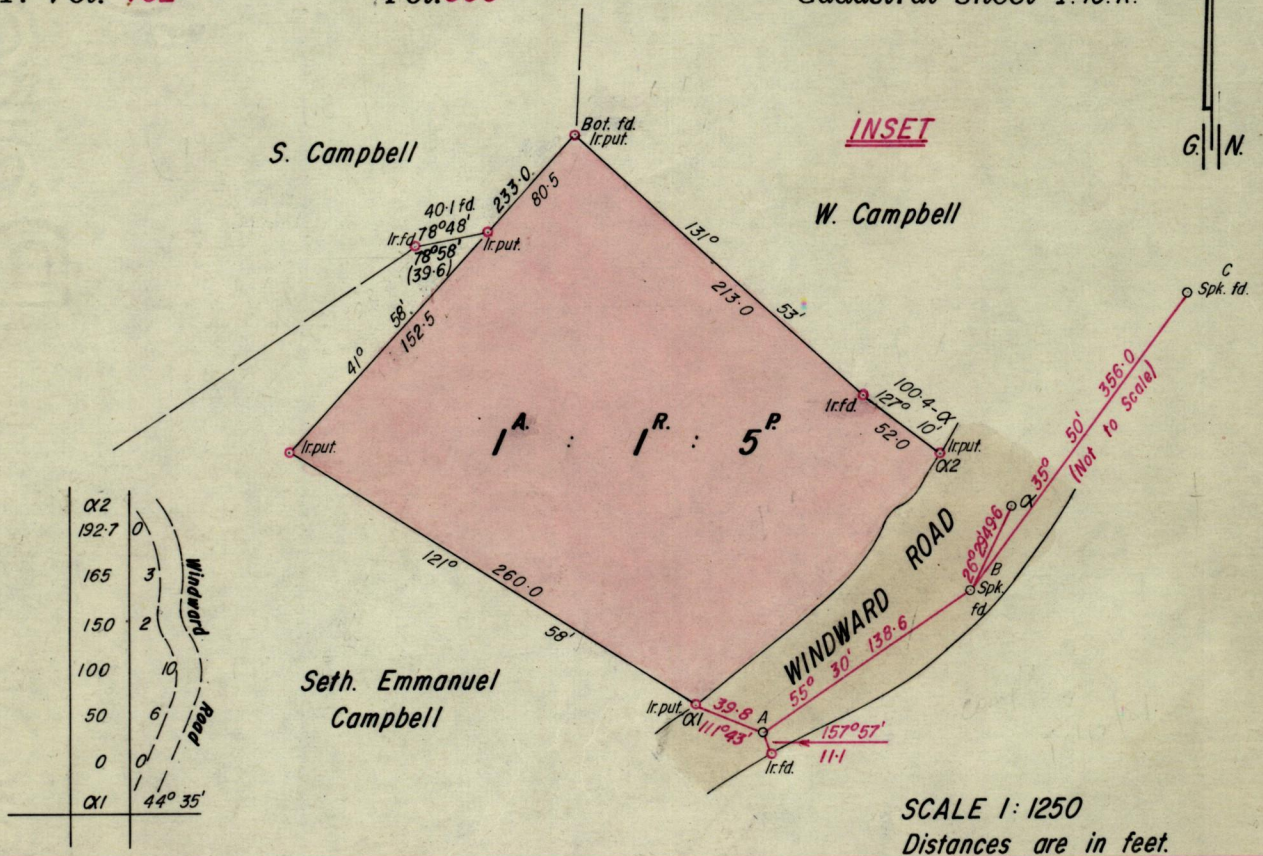


R.P.O. Vol 302
C.T. Vol. 462

Fol. 147
Fol. 395

Ward of Tobago.
Parish County of St. John.
Cadastral Sheet I.10.K.



Approved *[Signature]*
82-06-10 Director of Surveys

SCALE 8 chain to 1 inch

Note: To obtain true compass bearings add/subtract 2 minutes Distances are in Links

PLAN of a Parcel of land coloured Pink in the Ward of Tobago.

Containing one acre one rood and five perches.

Surveyed by me, with due authority, in September 1979

I certify that I have complied with rule 76 under section 14(2)(d) of the Land Surveyors' Ordinance 1952, and that this plan is correct.

Checked by *[Signature]* 82/06/09 *[Signature]*

Entered Land Surveyor, Trinidad 9th December 1981