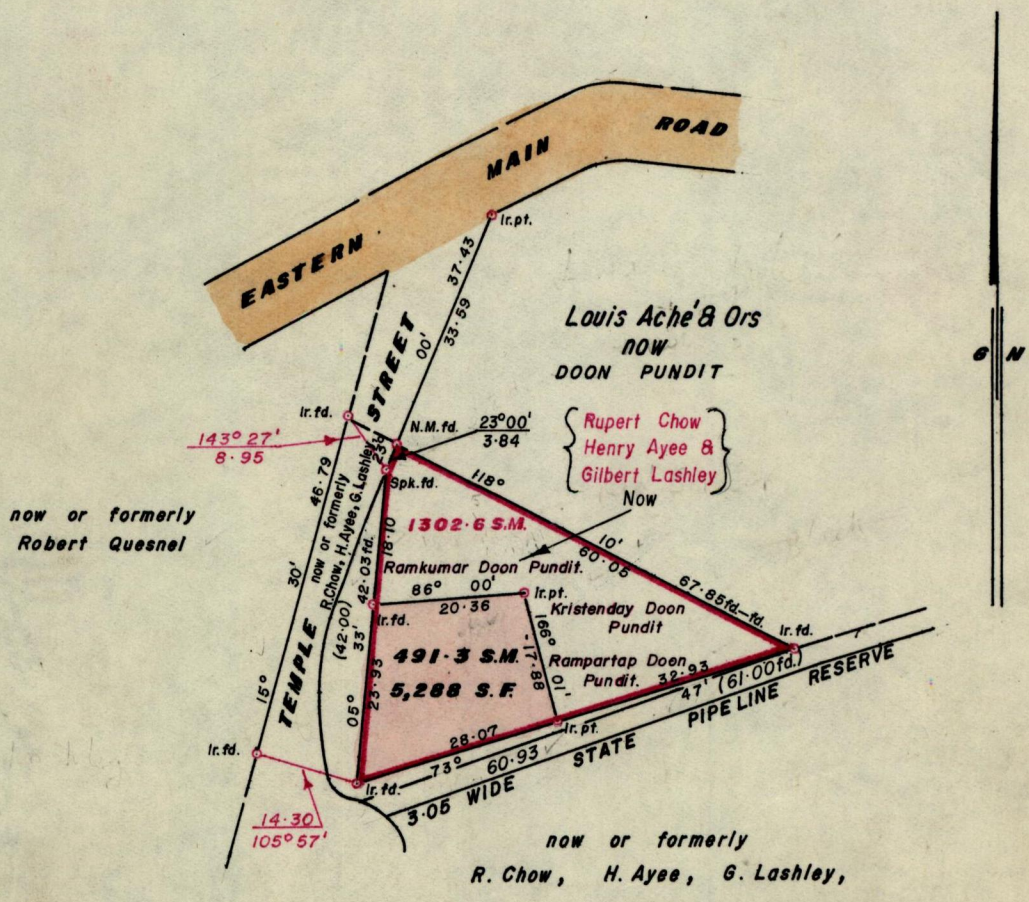


R.P.O. Vol
C.T. Vol. 1487.

Fol.
Fol. 233.

Ward of ARIMA.
County of ST. GEORGE.
Cadastral Sheet B. 20. M.



Approved *[Signature]*
82.06.01 Director of Surveys

Bearings are Grid based on Solar Observations. SCALE 1:1000.
Note: To obtain compass bearings add/subtract 10 minutes Distances are in METRES.

PLAN of a Parcel of land coloured PINK in the Ward of ARIMA.
Containing FOUR HUNDRED AND NINETY ONE POINT THREE SQUARE METRES.
Surveyed by me, with due authority, in MARCH 1982.

I certify that I have complied with rule 76 under section 14(2)(d) of the
Land Surveyors' Ordinance 1952, and that this plan is correct.

Checked by *[Signature]* 82/06/01 *[Signature]*
Entered Land Surveyor, Trinidad 6th May 1982