

No 46359

R.P.O. Vol. 382

Fol. 523

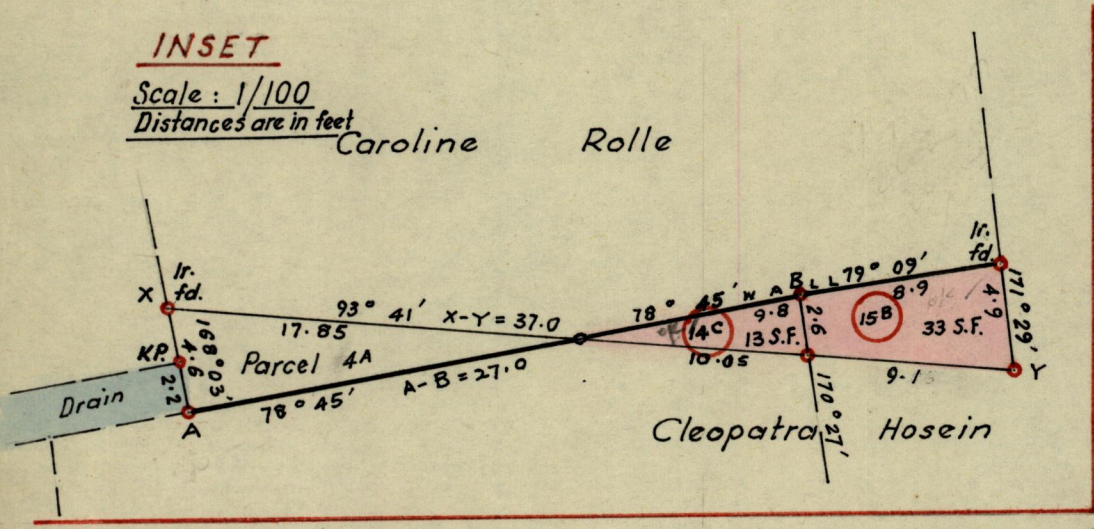
C.T. Vol. 2527

Fol. 105

Ward of St. Ann's
County of St. George
Cadastral Sheet A. 20. P

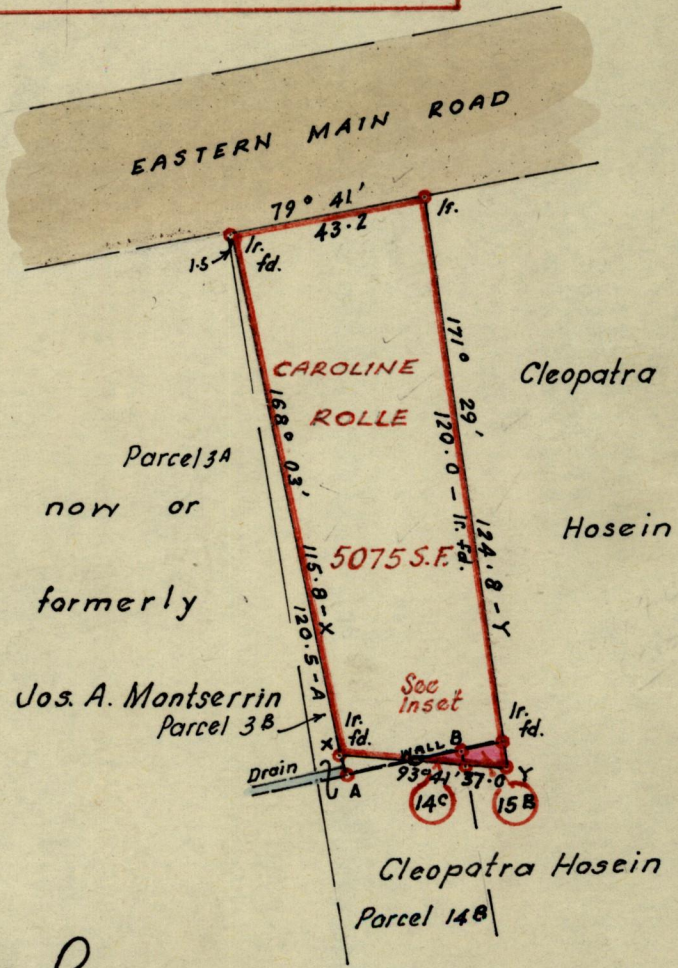
INSET

Scale: 1/100
Distances are in feet



G. N.

N.B. Iron put at each corner
except otherwise indicated.



Approved

John Samuel
Director of Surveys

82.05.04

SCALE: 1/500

Note: To obtain compass bearings ~~add~~ subtract 1 minutes Distances are in feet

PLAN of 2 Parcel of land coloured pink in the Ward of St. Ann's

~~Containing~~

Surveyed by me, with due authority, in October 1981

I certify that I have complied with rule 76 under Section 14 (2) (d) of the Land Surveyors' Ordinance 1952, and that this plan is correct.

Checked by *Hd. 82/05/03*

Leslie C. Skemp
Land Surveyor, Trinidad 9th November 1981

Entered.....