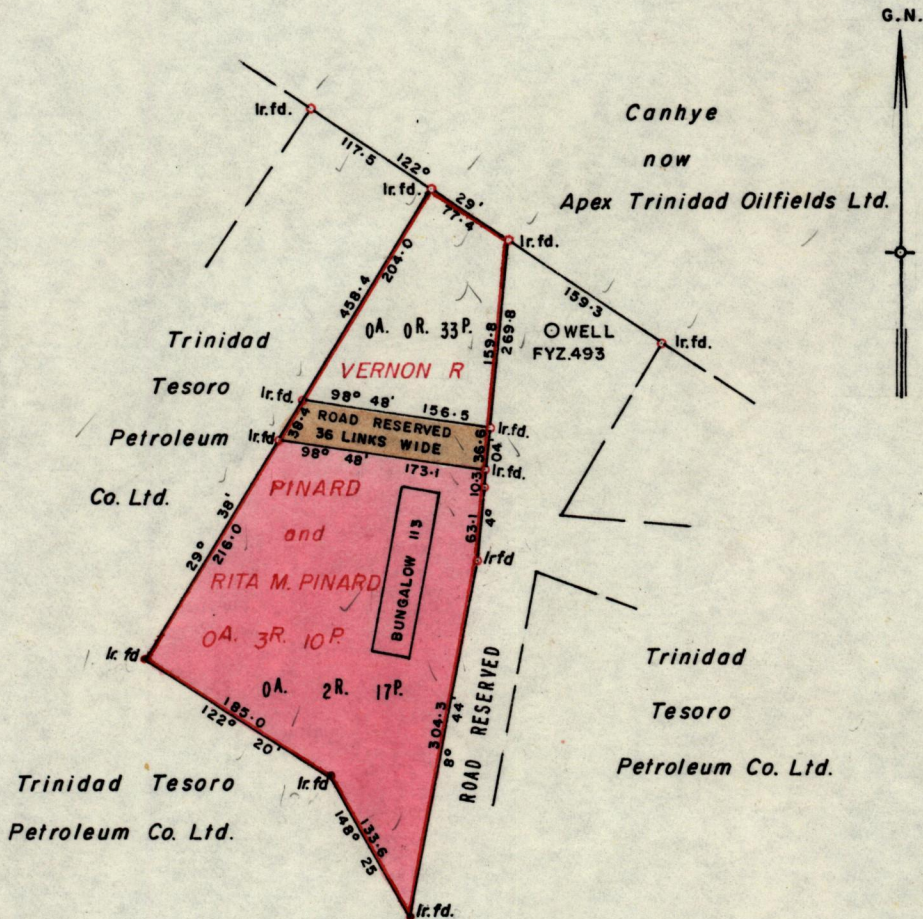


No 1477

R.P.O. Vol. 2423  
C.T. Vol. 2526

Fol. 95  
Fol. 453

Ward of SIPARIA  
County of ST. PATRICK  
Cadastral Sheet G12I



Approved

*John Samuel*  
2.6.81. Director of Surveys

SCALE 1:1250

Note: To obtain compass bearings ~~add~~/subtract 7 minutes Distances are in links

PLAN of a Parcel of land coloured Pink in the Ward of SIPARIA  
Containing TWO Roods and SEVENTEEN Perches  
Surveyed by me, with due authority, in May 1979

I certify that I have complied with rule 76 under section 14(2)(d) of the  
Land Surveyors' Ordinance 1952, and that this plan is correct.

Checked by *(Signature)* 2.6.81

*Vernon Pinard*  
Land Surveyor, Trinidad 19<sup>th</sup> March 1981.