

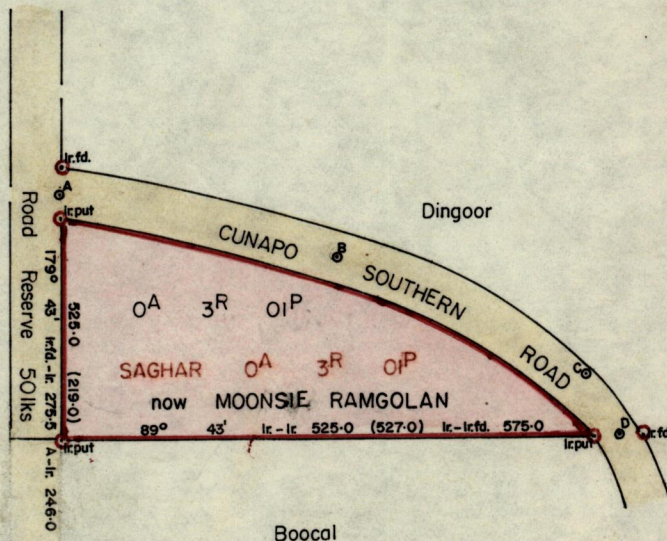
No 682

R.P.O. Vol. 15
C.T. Vol. 1645

Fol. 463
Fol. 207

Ward of Turure
County of St. Andrew
Cadastral Sheet E.2.J

A-B	103° 23'	282.0
B-C	115° 06'	277.0
C-D	154° 58'	66.6



Approved *[Signature]*
 26.2.81 Director of Surveys

SCALE 1:1500

Note: To obtain compass bearings add/~~subtract~~ 17 minutes Distances are in links.

PLAN of a Parcel of land coloured pink in the Ward of Savana Grande.

Containing three roods and one perch.

Surveyed by me, with due authority, in October, 1980.

I certify that I have complied with rule 76 under section 14(2)(d) of the Land Surveyors' Ordinance 1952, and that this plan is correct.

Checked by *[Signature]* Cecil Herbert

Entered Land Surveyor, Trinidad 3rd December 1980