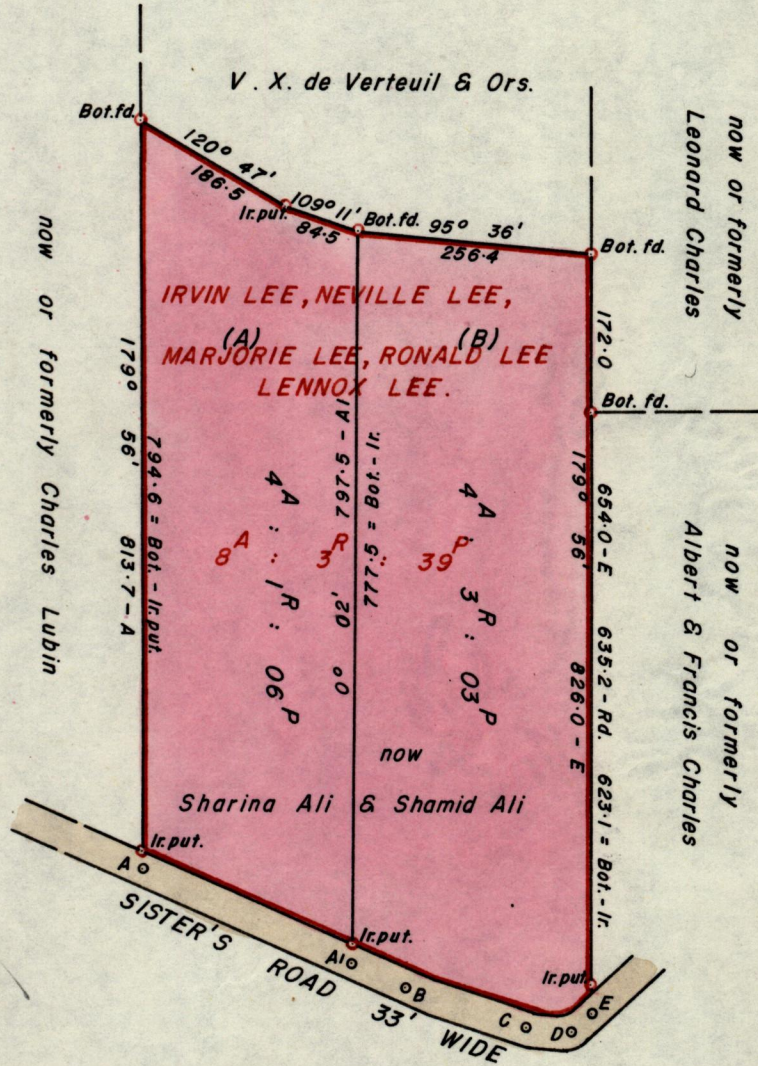


No 2535

R.P.O. Vol. 32
C.T. Vol. 1009

Fol. 17
Fol. 343

Ward of Savana Grande
County of Victoria
Cadastral Sheet D 24. N. & M



REFERENCE

Sta.	Bearing	Distance	Sta.
A	114° 05'	316.9	B
B	107° 40'	139.7	C
C	95° 32'	50.4	D
D	53° 48'	28.0	E
A	114° 05'	260.7	A

Approved

John Lawrence
Director of Surveys

23. 11. 81

SCALE 1 : 2500

Note: To obtain compass bearings add/subtract 4 minutes Distances are in feet.

PLAN of 3 Parcels of land coloured pink in the Ward of Savana Grande
Containing together nine acres and nine perches.

Surveyed by me, with due authority, in February 1981.

I certify that I have complied with rule 76 under section 14(2)(d) of the
Land Surveyors' Ordinance 1952, and that this plan is correct.

Checked by *Hankar* 17/11/81

Winson Ramcharan

Entered

Land Surveyor, Trinidad 1st July 19. 81