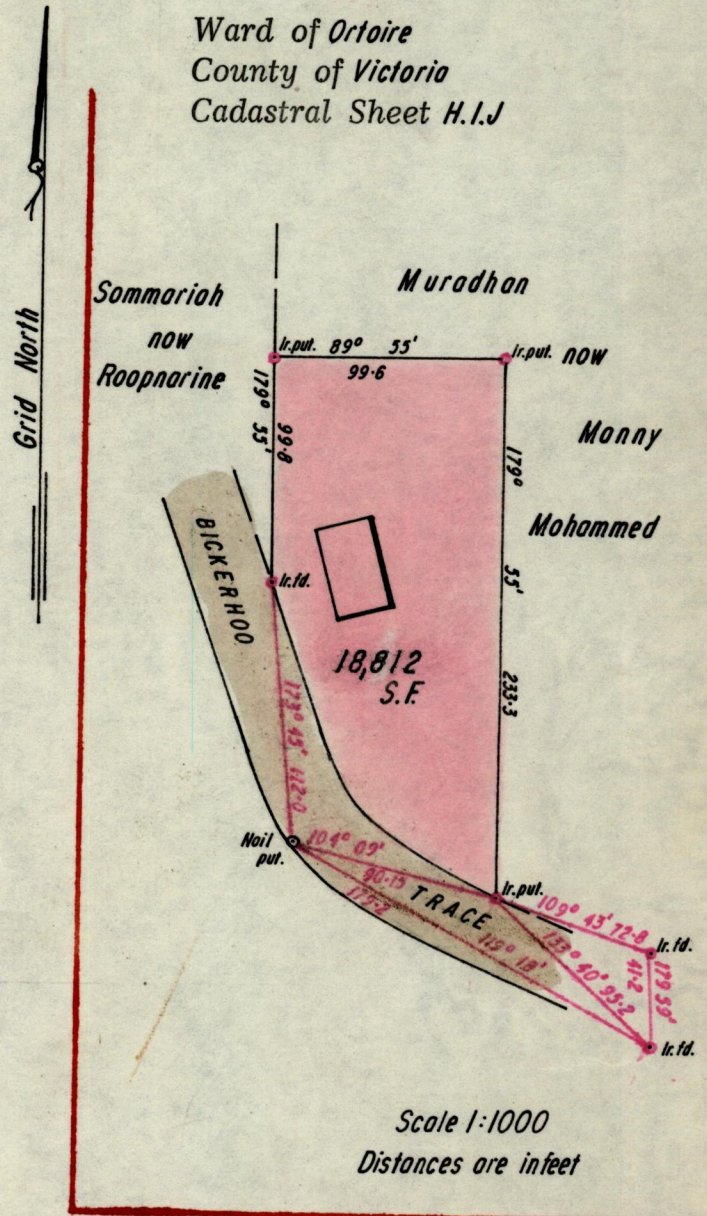
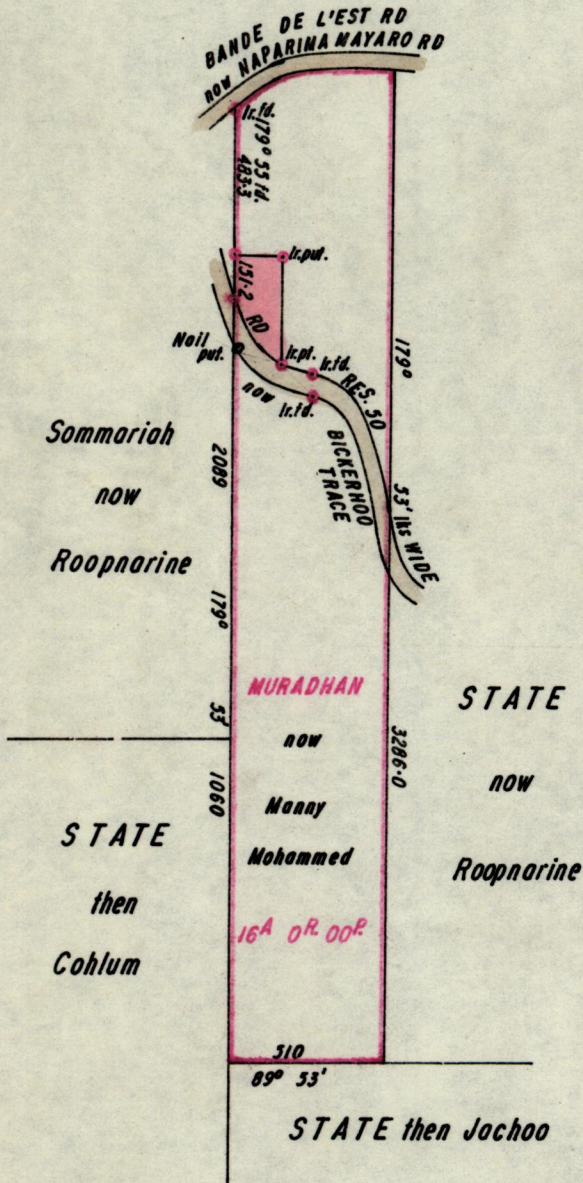


No 4190

R.P.O. Vol. 15  
C.T. Vol. 24

Fol. 487  
Fol. 567

Ward of Ortoire  
County of Victoria  
Cadastral Sheet H.I.J



Approved

*John Samuel*  
Director of Surveys  
13.11.81.

SCALE 1:5000

Distances are in links

Note: To obtain compass bearings add/subtract 7 minutes

PLAN of a Parcel of land coloured pink in the Ward of Ortoire

Containing eighteen thousand eight hundred and twelve square feet

Surveyed by me, with due authority, in March 1981

I certify that I have complied with rule 76 under section 14(2)(d) of the Land Surveyors' Ordinance 1952, and that this plan is correct.

Checked by *W. Harker* 13/11/81

*J. Amar An.*  
Land Surveyor, Trinidad 16<sup>th</sup> October 1981

Entered .....