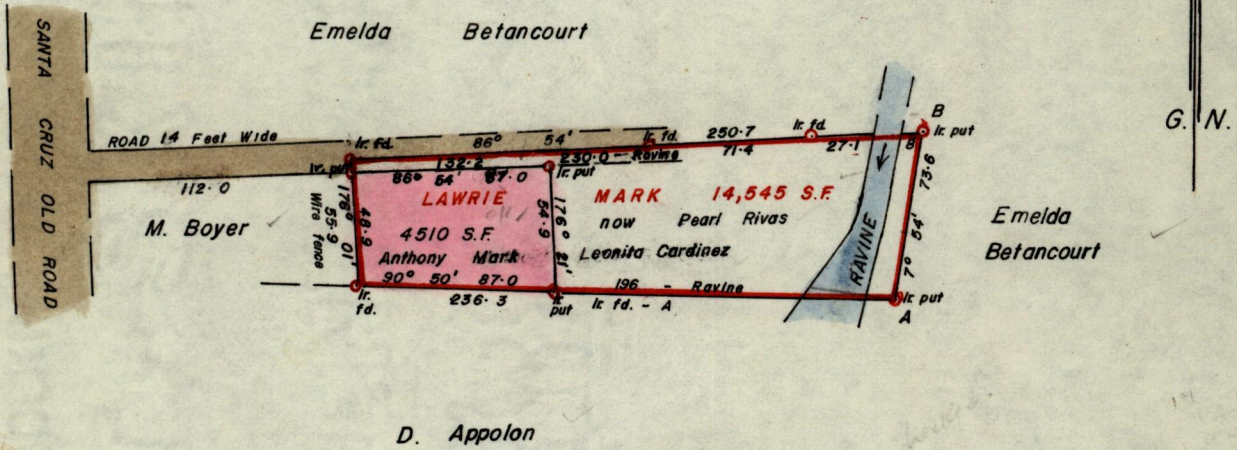


No 2389

R.P.O. Vol. 1681
C.T. Vol. 1681

Fol. 213
Fol. 213

Ward of St. Anns
County of St. George
Cadastral Sheet B. 17 F



LEGEND

	B	
20	8 73.6	lr. put
↓		
20	8 30	
40 Ravine	13	lr. put 55' 70 54'

Approved

H. B. Joseph
 Director of Surveys
 1.10.81

SCALE 1/1000

Note: To obtain compass bearings add/subtract / minutes Distances are in feet

PLAN of a Parcel of land coloured pink in the Ward of St. Anns
 Containing four thousand, five hundred and ten square feet
 Surveyed by me, with due authority, in May, 1981

I certify that I have complied with rule 76 under section 14(2)(d) of the Land Surveyors' Ordinance 1952, and that this plan is correct.

Checked by *[Signature]* 30/2/81

Entered

[Signature]
 Land Surveyor, Trinidad
 10th August 1981