

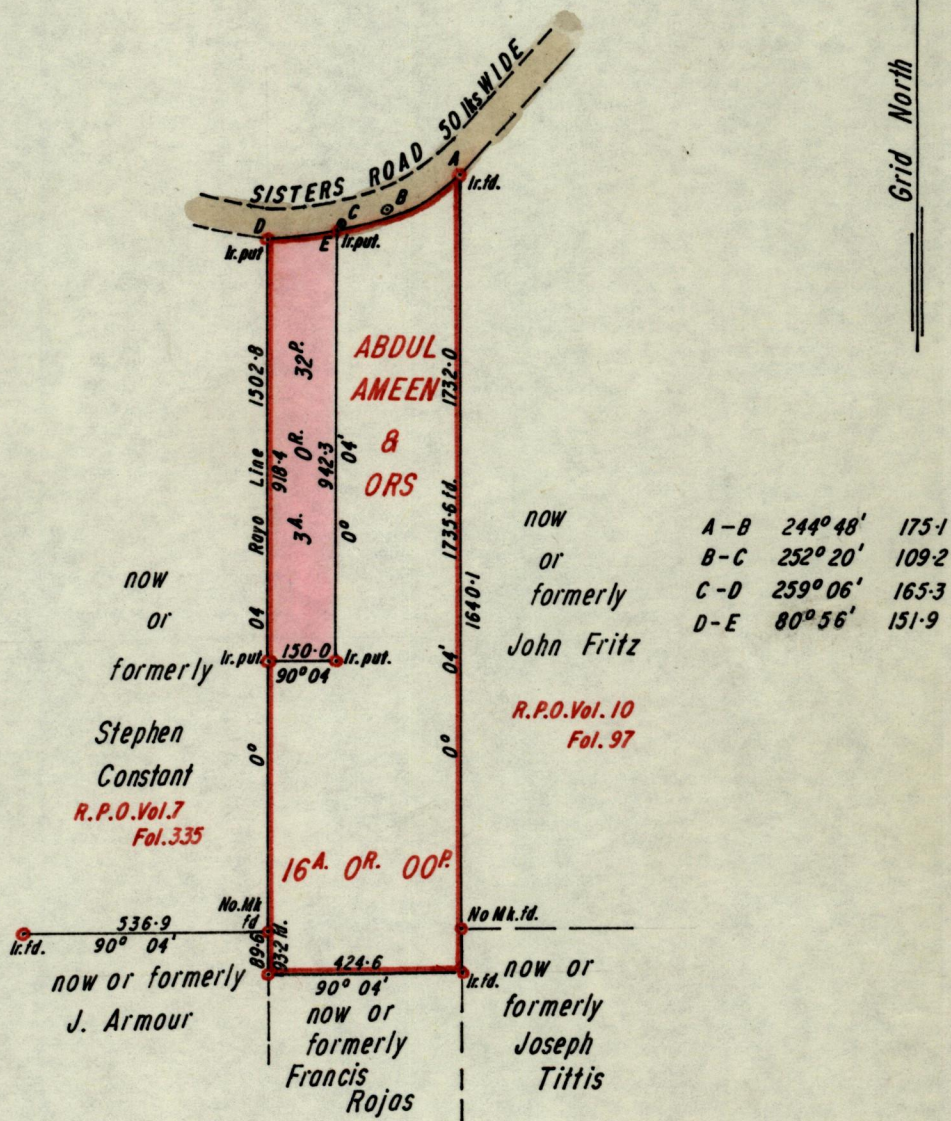
No 280

R.P.O. Vol. 17  
C.T. Vol. 1232

Fol. 208  
Fol. 37

Ward of Savana Grande  
County of Victoria  
Cadastral Sheet D. 24.0

Grid North



Approved

*K.B. Jost*  
Director of Surveys  
11.9.81

SCALE 1:5000

Distances are in feet

Note: To obtain compass bearings ~~add~~/subtract 4 minutes  
PLAN of a Parcel of land coloured pink  
Containing three acres and thirtytwo perches  
Surveyed by me, with due authority, in Oct 1980

in the Ward of Savana Grande

I certify that I have complied with rule 76 under section 14(2)(d) of the  
Land Surveyors' Ordinance 1952, and that this plan is correct.

Checked by *[Signature]* 4/9/81

*Winston Rameloa*

Entered .....

Land Surveyor, Trinidad 24th November 1980